

ESI

EQUIPMENT INC



FULL PRODUCT CATALOG

2022.ESI.VER.1



WHY CHOOSE ESI EQUIPMENT?

Innovation and dedication have made ESI Equipment one of the largest full-service dealers in North America, handling dozens of different equipment lines. ESI was started by first responders that understand today's challenges in Fire, EMS, Rescue, Law Enforcement, and other response entities. From our experience Instructors, our Trained & Certified Service Technicians, to our passionate Sales Representatives, ESI is proud to be the choice of thousands of departments dedicated to serving their communities.

OUR MISSION

To supply, support, and educate the emergency response community with innovative equipment and the latest knowledge and information to continue to enhance, simplify, and elevate your life-saving efforts. ESI Equipment, Inc. is made up of multiple divisions to serve as a proven and reliable industry resource for 25+ years.

ESI RESCUE DIVISION

Specializing in new vehicle technology, ESI is dedicated to providing our customers with the best products to perform the rescue tasks confronted by today's rescuers. The staff at ESI is prepared to demonstrate equipment at your departments for a real "hands-on" experience. We pride ourselves in providing the most current vehicle rescue training information and techniques through our training courses, staffed with instructors that all have at minimum 10+ years of street and training experience. To ensure your tools are always performing at maximum capability, we offer free, on-site delivery-training with every Rescue Tool Purchase.

A 1-year free Preventative Maintenance Contract is also included with every Rescue Tool Purchase to ensure your tools are always performing when it counts. Our Service Department, armed with Full time factory trained service technicians, offer a unique variety of Service Contracts that include onsite preventative maintenance on your tools and Emergency repair response that can be done at customer's locations. Straight from the heart of our company, 24-hour emergency support and loaner equipment are always available to our customers.

JUNKYARD DOG INDUSTRIES (JYD INDUSTRIES)

a division of ESI Equipment

Specializing in vehicle stabilization & lifting, rescuer safety, and patient protection products, JYD Industries™ aims to equip the emergency response community with simple, lightweight, and proven first-in equipment to enhance rescue and life-saving efforts for first responders. JYD Industries™ is dedicated to arming you with the extrication and stabilization equipment you need to face new car technology challenges. JYD Industries consists of quality, American made vehicle stabilization and first-in tools supporting the emergency services workers when lives matters.

ESI APPARATUS DIVISION

ESI has always offered to our customer base the ability to design, fabricate and install well thought-out hydraulic rescue systems. Today, we offer complete fire apparatus installation of all equipment (at your location or ours). Our ESI Rapid Response Units offer an advanced economical solution to today's high vehicle operating costs. With transferable bodies that fit any domestic pick-up, custom interior configurations upfitted with remarkable capability, and a uniquely engineered wiring harness housing all components mounted inside the cap, these units offer a rare opportunity to reduce operating costs and enhance your capabilities.

ALL-TERRAIN INNOVATION MEETS OFF-ROAD RESPONSE with our latest addition to the Apparatus Division. Built by TOMCAR, the ESI Xtreme Response Units are unlike any other utility or side-by-side vehicle on the market, TOMCAR was originally designed as a military operations vehicle, not as a consumer toy. TOMCAR's highly functional, extremely durable and surprisingly versatile mission-built off-road apparatus in conjunction with ESI Apparatus Division's custom interior configurations upfitted with remarkable capability, the resulting Xtreme Response Units (XRUs) are an industry game-changer. Designed for Fire, EMS, or Combination of services on a rugged off-road platform is what makes the XRU extreme!

ESI EQUIPMENT, INC

119 Keystone Drive, Montgomeryville, PA 18936
Phone: 267-803-1440 / Toll Free: 1-800-574-8228
Fax: 267-803-1447
Email: info@esiequipment.com
www.ESLequipment.com

TABLE OF CONTENTS

04	HOLMATRO Rescue Tools
12	LIFTING BAGS Holmatro & SAVA
16	ESI SERVICE DEPARTMENT Preventative Maintenance Service Contracts
18	ESI HEALTH & SAFETY DIVISION Aseptic & Toxic Suppression
22	JUNKYARD DOG INDUSTRIES STABILIZATION EQUIPMENT Rescue Struts, Sidewinder Jack, and more
32	CRIBBING Turtle Plastics
34	HI-LIFT Hi-Lift Jacks
35	AJAX Rescue Kits
36	CHAINS & WINCHES Warn, Tractel, and more
42	RESPONDER BAGS Junkyard Dog Industries
46	1ST IN ESSENTIALS Junkyard Dog Industries, Packexx
54	RUPTURE SEAL
55	VP FUEL
56	HAND TOOLS Milwaukee & Other
58	ESI RACE TRACK SAFETY SERVICES
63	FIRE SUPPRESSION SYSTEM & FOAM Enforcer Portable CAFs & Firebull Foam
72	ESI APPARATUS DIVISION Responder Vehicles & Custom Installation; PAC Tool Mounts
76	APPAREL & ACCESSORIES Safety Glasses & Gloves
78	ESI TRAINING PROGRAMS
79	RECOGNITION AWARDS Holmatro Gold Pin & Junkyard Dog Industries Dog Bone Awards



ESI Equipment is the largest and most advance Dealer and Service Center for all Holmatro Equipment and the sole distributor in NJ, DE, WV, and PA

For over half a century, Holmatro has been developing the most innovative and powerful hydraulic equipment for rescuers worldwide.

CORE TECHNOLOGY

In 2005 Holmatro introduced a revolutionary new technology that would change the world of rescue and become the new international standard. CORE tools only have one hose with one coupler on each end and eliminate the need to operate a valve on the pump, as they can be changed under flow - This significantly saves precious set-up time and manpower. Compared to our EVO 3 battery-powered rescue tools, CORE tools are lighter and, with a higher flow pump, also quicker. However, the performance of both tool types is the same.



EVO3 BATTERY TECHNOLOGY

A convenient way to make any CORE tool battery operated and portable! EVO3 Compact battery-operated pumps originally used on the back of tools, are now available in a portable backpack pump or Grab and Go Bag. A 6' CORE connector hose makes it a one-person operation with any spreader, cutter, or combination tool.

PENTHEON BATTERY TECHNOLOGY

Working under pressure, in a race against time, first responders need rescue tools they can fully rely on. It is for these men and women that we have developed our Pentheon Series: hydraulic rescue tools that are miles ahead of all other rescue equipment on the market. Only the Holmatro Pentheon Series offers you unrestrained performance, unparalleled speed, and ultimate control you've never experienced before.



THE 30° REVOLUTION

With its unique and purpose-built 30-degree angled jaw, Holmatro Inclined Cutters improve user comfort and maximize working space. Inclined Cutting keeps the ideal 90° angle towards the construction required for effective cutting and optimal performance, offering 30 degrees more working space between the tool and the car leaving more room for tool movement and eliminating the need for repeated cutter repositioning.

NCT BLADES

Holmatro's New Car Technology (NCT) Cutters generate high forces and have excellent EN and NFPA performance scores. The U-shaped NCT blades pull even the strongest new car materials into the cutting recess where they are cut at the highest possible force. NCT cutters are continuously tested on the latest and strongest vehicle models so not only do they perform well on today's toughest cars, but they also have a capacity reserve for the future when even stronger cars will be driving on our roads.





WHY CORE TECHNOLOGY

CORE Technology is a revolutionary turning point in rescue tool technology. More than just a new tool, hose or pump it is a new hydraulic system that fundamentally changes the extrication process. When lives are at stake, it's all about speed and safety. Compared to working with a traditional system, working with CORE is safer, quicker & easier. Once you try CORE Technology and discover its unprecedented benefits, you will not want to go back to a traditional system.

ONE-HOSE SYSTEM (HOSE IN HOSE), PROTECTED POWER

High Pressure Hose inside and
protected by low pressure hose

SAFETY COUPLERS

One step auto-lock coupler:
Couples and locks in just one
push; Two step uncoupling
system: Accidental uncoupling
impossible during rescue
operation

PARA-ARAMID FIBER REINFORCED HOSE (NO STEEL)

No risk of kinking or pinholes,
like with traditional steel
reinforced hoses

CHANGE TOOLS UNDER FLOW

Quickly Change tools any
time without operating a
release valve on the pump
while being efficient by saving
precious manpower

UNIQUE PATENTED CORE COUPLERS mounted directly on the tools (NO pigtail hoses!)

No hose entanglement due to the
360 degree rotating couplers on
both the tool and pump and no
swinging pigtail hoses when
carrying the tool

COUPLING AND UNCOUPLING WITH ONE HAND

Uniquely designed with special
rips on both hose ends, you
can connect & disconnect a
tool with one hand while
standing

SAFER



QUICKER
&
EASIER



CORE
Hose Technology

PENTHEON BATTERY TECHNOLOGY



THE NEW SUPERIOR PENTHEON SERIES UNRESTRAINED PERFORMANCE FOR YOUR MISSION

Only the new Holmatro Pentheon Series offers you unrestrained performance, unparalleled speed, and ultimate control you have never experienced before. And with battery management made easy, you are always rescue ready.



EXTENDED WORKING TIME

Purpose-built battery with increased capacity



UNPARALLELED SPEED

Stepless speed maximization



UNDER WATER USE

Can be used while being fully submerged in water



EASE OF USE

Inline control handle with 360° access; 360° carrying handle



ULTIMATE CONTROL

Two-mode control handle for ultimate speed control



REALTIME DIAGNOSTICS

LED indicators /
Holmatro Diagnostics Software



TEMPERATURE MANAGEMENT

Keep working in extremely hot conditions



EASY BATTERY MANAGEMENT

On-tool charging



PENTHEON SERIES TOOLS

Cutters



Cutter PCU50
10443 psi lbf max
47.4 lbs.
Incline Jaw



Cutter PCU30CL
10443 psi lbf max
47.4 lbs.
Incline Jaw



Cutter PCU40
171754 lbf max
41.9 lbs.
Incline Jaw



Cutter PCU60
396788 lbf max
55.1 lbs.
Incline Jaw

Spreaders



Spreader PSP40
62947 lbf Max Spread
28.5" Spread distance
42.8 lbs.



Spreader PSP40CL
29450 lbf. Max Spread
20.1 " Spread distance
33.5 lbs.



Spreader PSP50
82280 lbf Max Spread
28.5 " Spread distance
42.8 lbs.



Spreader PSP60
17350 lbf Max Spread
32.3" Spread distance
55.1 lbs.

Combi Tools



Combi PCT11
Spread Force 303492 lbf
Cutting Force: 60249 lbf
Spreading Dist. 11.1"
30.4 lbs.



Combi PCT14
Spread Force 303492 lbf
Cutting Force: 60249 lbf
Spreading Dist. 14.3"
31.3 lbs.



Combi PCT50
Spread Force 418145 lbf
Cutting Force: 150622 lbf
Spreading Dist. 15"
44.8 lbs.



Combi PCT60
Spread Force 418145 lbf
Cutting Force: 208848 lbf
Spreading Dist. 18.4"
51.6 lbs.

Rams



Telescopic RAM PTR40
1st plunger: 30574 lbf max
2nd plunger: 14613 lbf max
Weight: 34.2 lbs.
Retracted : 15.92" / Extended: 31.2



Telescopic RAM PTR50
1st plunger: 30574 lbf max
2nd plunger: 14613 lbf max
Weight: 43.9 lbs.
Retracted : 28.2" / Extended: 5.7



**Single Plunger
Ram PRA40**
1st plunger: 30574 lbf max
Weight: 31.3 lbs.
Retracted : 15.2 / Extended: 23.6



**Single Plunger
Ram PRA50**
1st plunger: 30574 lbf max
Weight: 39.5 lbs.
Retracted : 22.8 / Extended: 38.8



SERIES TOOLS

Cutters



CU 4007 C
49458 lbf max
8.41 lbs.



CU 5040 i
171,754 lbf max
29.1 lbs.
Incline Jaw



CU 5050 i
312,260 lbf max
35.1 lbs.
Incline Jaw



CU 5060 i
396,788 lbf max
43.7 lbs.
Incline Jaw
ALL 9 NFPA

Spreaders



SP 5240 CL
29,450 lbf max
20.1" · 21.8 lbs.



SP 5240
62,947 lbf max
28.5" · 32 lbs.



SP 5250
82,280 lbf max
28.5" · 35.9 lbs.



SP 5260
117,350 lbf max
32.4" · 43.2 lbs.

Combi Tools



CT 5111 ST
Spread: 303,492 lbf.
Cut: 60,249 lbf
11.1" · 17.4 lbs.



CT 5114 ST
Spread: 303,492 lbf
Cut: 60,249 lbf
14.3" · 20.1 lbs.



CT 5150
Spread: 418,145 lbf
Cut: 150,622 lbf
14.2" · 32.6 lbs.



*** CT 5160**
Spread: 418,145 lbf
Cut: 208,848 lbf
18.4" · 38.9 lbs.

Hand Operated Combi Tools



HCT 5111 ST
Spread: 303492 lbf
Cut: 60,249 lbf
11.1" / 19.2 lbs.



HCT 5114 ST
Spread: 303,492 lbf
Cut: 60,249 lbf
14.3" / 20.1 lbs.



Rams

Holmatro's 5000 series Rams are lighter and more ergonomic than ever! With an Increased spreading force of the second plunger (where you need it the most!) and more length to expand your options during extrication, you will find an overall improved performance. Now featuring a game changing integrated laser pointer (patent pending) that marks the exact spot where the ram head will contact the vehicle once extended, saving you time and making it safer for the patient. The new EVO3 battery operated telescopic rams, GTR 5340 LP EVO3 and GTR 5350 LP EVO3 are the strongest cordless telescopic rams in the market and the smallest 5340 model is also the lightest one.



TR 5340 LP

1st plunger: 48,784 lbf max
2nd plunger: 22,706 lbf max
Weight: 20.3 lbs.
Retracted/Extended Length: 13.2/24 in



TR 5350 LP

1st plunger: 48,784 lbf max
2nd plunger: 22,706 lbf max
Weight: 32.2 lbs.
Retracted/Extended Length: 22/50.6 in



TR 5370 LP

1st plunger: 51,931 lbf max
2nd plunger: 24,954 lbf max
Weight: 37.3 lbs.
Retracted/Extended Length: 25/59.5 in

Holmatro Spider Range Power Units

A natural evolution in pumps: More speed; More ergonomics; More power; More options. Gas and Electric available using 3-Stage Pump Technology, Holmatro Pumps are equipped with a soft-drip carrying handle, large hydraulic oil capacity, and Hydraulic oil level sight indicator for fast and easy checking. Quiet, Compact, Lightweight and easy to store, Pumps are available in CORE and Twin Line.



SR10 PC 1

1-Output



SR20

2-Output



SR20 Electric

2-Output



SR40 ZC 4

4-Output



Backpack Pump & Door Breaching Tools

In cooperation with the United States Military, Holmatro has designed new – lightweight door breaching tools. A powerful Door Ram (DR200), available in two different variations and lightweight, battery driven pump in a convenient backpack. Designed for use on inward opening doors with multiple locking devices, the long stroke of the tool is enough to open even the most flexible doors. The DR200 and DR200EVO3 are suitable for use on outward opening doors with the assist of manual breaching tools. The DR200 allows the operator to safely use the door opener from a safe position, not in front of the door, with its unique 90 degree toe.

The GBP10EVO3 is a small, lightweight battery-driven backpack pump with a CORE connector. The pump has an oil reserve large enough to be used in combination with all our CORE rescue tools except the 15t and 22t telescopic rams. The pump uses our well-known and proven battery-powered EVO3 technology. The battery used for the pump is the same as is used for all other EVO3 tools.

This pump is very compact and emission-free and easily carried by one person. It is also ideal for powering rescue equipment in confined spaces.



Backpack Pump GBP10EVO3

Weight: 16.5 lbs.
Dimensions: 15 x 9.4 x 4.7 in
Connector Type: CORE
Operator Type: Battery



Door Ram (DR200)

Spreading force: 15961 lbf
Weight: 16.8 lbs.
Retracted Length: 23.5 in.
Extended Length: 35.3 in.
CORE Technology



Door Ram (DR200EVO3)

Spreading force: 15961 lbf
Weight: 29.5 lbs.
Retracted Length: 28.7 in.
Extended Length: 40.5 in.
EVO3 Battery

Core Battery Pump & Go Bag

Part #: ESI-BPnG-3

When a battery powered backpack pump doesn't quite fit your needs for deployment of your Core technology tools, consider moving the pump into a carrying bag. A bag with carrying handles, shoulder strap and waterproof Tuff Bottom which makes deploying battery powered Core Technology tools even easier.



CONTROL UNIT HTC 12



AIR SOURCE PRESSURE GAUGE

Easy checking of incoming air pressure. Allows for timely air source replacement.

SAFETY COUPLER (ALSO ON HOSES)

Unlocks in two steps for improved safety: pressure release before hose disconnection.

INTUITIVE BUTTON OPERATION

Precise air flow regulation for controlled and safe lifting.

NON-RETURN VALVES

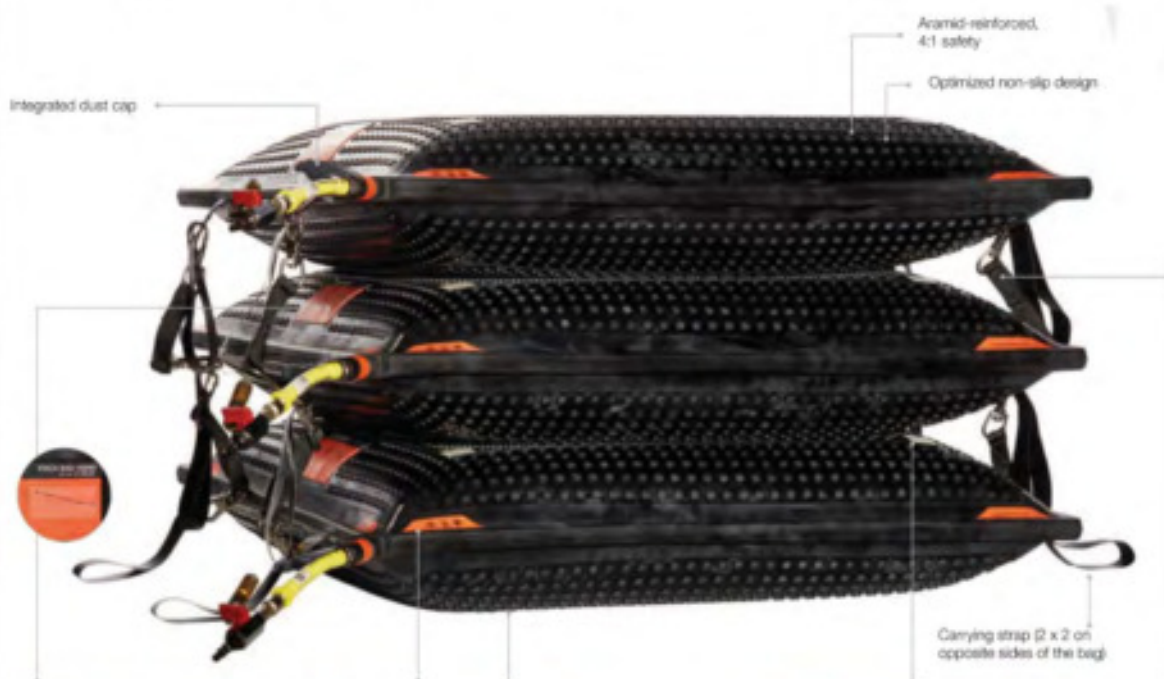
Independent controlled lifting: no risk of air pressure shifting from one bag to the other.

3 WAY CONTROLLER

Allows you to operate three Stack Bags with a single control unit. The HDC 12 (see page 7) is also compatible with the Stack Bags system, but can operate only two bags.

HSB STACK BAG SERIES

For stable lifting over a greater height. When inflating the new 12-bar Holmatro Stack Bags the contact surface will stay flat. This allows for easy stacking of up to three bags. The compact HSB Stack Bags all have the same lifting height, so even in small spaces, you can raise heavy loads up to 510 mm. The lifting capacity of the four new Holmatro Stack Bags varies between 27 and 92 tons. The full system is compliant with all relevant safety standards, including EN 13731 and NFPA 1936 2020 edition.



GRAPH OF LIFTING CAPACITY & LIFTING HEIGHT

Graph showing the maximum lifting capacity of a single stack bag at the start and when it is fully inflated.

IMPORTANT INFORMATION LABELS

Clear indication of safety warnings and technical specifications. Data matrix for equipment management in the free Holmatro Service Portal.

FLAT SURFACE

Contact surface remains flat when bag is pressurized. Stack up to three bags for stable, higher lifting. Maximum lifting height with three stacked bags is 510 mm, even with a set of the smallest bags.

CLEAR MARKINGS OF CONTACT AREA

For quick and easy stacking of up to three bags. The optimized non-slip profile maximizes the stability of inflated Stack Bags.

OPTIONAL RETAINING STRAPS

Easy carabiner style straps to help prevent stacked bags from shifting.



EXTRA LARGE
HSB92



LARGE
HSB74



MEDIUM
HSB40



SMALL
HSB27



12 BAR LIFTING BAGS, 174 PSI

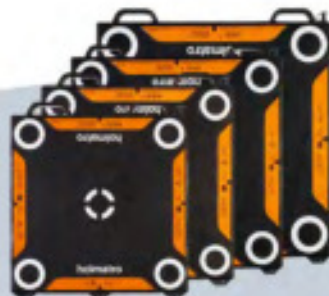
Holmatro introduces a full range of 174 psi 12 bar lifting bags delivering a 50% higher performance. The new bags have a 50% higher lifting capacity than an 8-bar lifting bag of equal size. This also means that you can get the same job done with a smaller and lighter bag. The lifting bags have been designed with a focus on maximum safety and control as well as ease of use.



SMALL
HLB 2 / HLB 6 / HLB 8



MEDIUM
HLB 11 / HLB 16 / HLB 21 /
HLB 31 / HLB 38



LARGE
HLB 53 / HLB 63 / HLB 85 / HLB 96

CONTROL UNIT HDC 12



AIR SOURCE PRESSURE GAUGE

Easy checking of incoming air pressure. Allows for timely air source replacement.

SAFETY COUPLER (ALSO ON HOSES)

Unlocks in two steps for improved safety: pressure release before hose disconnection.

INTUITIVE BUTTON OPERATION

Precise air flow regulation for controlled and safe lifting.

NON-RETURN VALVES

Independent controlled lifting: no risk of air pressure shifting from one bag to the other.

ACCESSORY PACKAGES

Visit us online to see available accessory packages and advisory sets





SAVA IS ONE OF EUROPE'S LARGEST AND MOST ADVANCED MANUFACTURERS OF SPECIALIZED RUBBER COMPOUNDS AND PRODUCTS. SAVA MANUFACTURES PNEUMATIC HIGH-PRESSURE HEAVY LIFTING AIR BAGS FOR HEAVY-DUTY, LOW PROFILE HEAVY LIFTING, EMERGENCY RESCUE, HAZMAT MANAGEMENT, AND INDUSTRIAL USE. PNEUMATIC LIFT BAGS LIFTING AIR BAGS

Flat-Form High-Pressure Lifting Bags



High Pressure Heavy Lifting Bags for lifting the heaviest loads; up to 92 US tons. Use when maximum lifting force is needed in low clearance situations. High pressure lifting bags exert maximum force in a concentrated area making them ideal when lifting rigid structures in tight places. Crisscross Kevlar reinforcing and thick, multi-layer rubber shell ensures long life under harsh conditions. Sava lifting bags are compatible with any other manufacturer's lift bag systems. Available in 10-Bar!

Available Sizes:

6" x 6" (Part #: SAV-291240)	9" x 9" (Part #: SAV-291241)
12" x 12" (Part #: SAV-291242)	15" x 15" (Part #: SAV-291243)
18" x 18" (Part #: SAV-291244)	22" x 22" (Part #: SAV-291245)
24" x 24" (Part #: SAV-291246)	27" x 27" (Part #: SAV-291247)
31" x 31" (Part #: SAV-291248)	34" x 34" (Part #: SAV-291249)
37" x 37" (Part #: SAV-291250)	

The newest development in the lifting bag industry is Flat-Form lifting bags. Flat-Form lifting bags significantly improve the operational characteristics of high-pressure lifting bags. The bag surface retains its flat profile increasing stability and stackability. Up to 3 bags can be stacked and bound together with nylon straps (sold separately). Now available in 8 and/or 10-Bar!

NEW High-Lift:	SIZES	8-Bar Part #	10-Bar Part #
31" x 31"	18" x 18"	SAV-282314	SAV-282432
37" x 37"	22" x 22"	SAV-519883	SAV-291294
	24" x 24"	SAV-519884	SAV-291295
	31" x 31"	SAV-519885	SAV-291296
	36" x 36"	SAV-519886	SAV-291297

H. Tech High Pressure Lifting Bags



Vehicle Catch Cushion

PART #: JYD-VCC



For an injured patient, removal procedures are less likely to cause further injury. The VCC allows you to lower the vehicle into a position that is easily recognizable and easily dealt with in the crucial time of extrication. Make a Complicated Extrication, Simple and dramatically reduce extrication time with JYD Industries Vehicle Catch Cushion.

Includes all the accessories necessary during rescue operations:

- 8 stainless steel D-rings for anchoring
- 2 cam-lock fill & discharge ports with caps
- 10' discharge hose with adjustable deflation control
- Weight: 35 lbs.
- Material: 5 mil. TPU composite
- Dimensions: 60"L x 42"H x 20"W
- Control descent: Domestic cars and light trucks
- 2 CamLock G' Straps
- Battery Powered Blower
- Thermal Protection Blanket
- Carry Bag

12 bar & 15 bar High Pressure Lifting Bags

NOVA & VEGA family of lifting bags, a novelty in our high-pressure lifting bags assortment will astonish with its lifting capacity and pressure class. With boosting the already proven properties of our existing the assortment we introduce a new concept in the field of rescue and recovery. Introducing new design with many new features on both, the bags and the accessories.



12
BAR

TECHNICAL DATA

TYPE	PART NUMBER	DIMENSIONS			WEIGHT	WORKING PRESSURE	AIR REQUIREMENT	MAX. LIFTING CAPACITY	MAX. LIFTING HEIGHT
		LENGTH	WIDTH	HEIGHT					
		[cm] / [inch]	[cm] / [inch]	[cm] / [inch]	[kg] / [lbs]	[bar] / [psi]	[l] / [cu.ft.]	[t] / [US Tons]	[cm] / [inch]
VEGA 2	608046	15 / 6"	15 / 6"	2.2 / 0.9"	0.5 / 1.2	12 / 174	4.5 / 0.16	1.4 / 1.5	8 / 3"
VEGA 5	608047	23.5 / 9.2"	23.5 / 9.2"	2.2 / 0.9"	1.2 / 3	12 / 174	22.4 / 0.79	4.9 / 5.4	13 / 4.9"
VEGA 10	608049	32 / 12.6"	32 / 12.6"	2.5 / 1"	2.5 / 5.5	12 / 174	63.4 / 2.24	9.8 / 10.8	17 / 6.9"
VEGA 17	608050	40 / 15.7"	40 / 15.7"	2.5 / 1"	4 / 8.8	12 / 174	131.7 / 4.65	16.7 / 18.4	22 / 8.5"
VEGA 25	608051	48 / 18.9"	48 / 18.9"	2.5 / 1"	5.7 / 12.6	12 / 174	236 / 8.33	25.1 / 27.6	26 / 10.4"
VEGA 33	608052	55 / 22"	55 / 22"	2.5 / 1"	7.5 / 16.5	12 / 174	365 / 12.89	33.2 / 36.5	30 / 11.9"
VEGA 41	608053	61 / 24"	61 / 24"	2.5 / 1"	9.3 / 20.5	12 / 174	681 / 24.05	41.2 / 45.3	34 / 13.2"
VEGA 50	608054	67 / 26.4"	67 / 26.4"	2.5 / 1"	11.2 / 24.7	12 / 174	897 / 31.68	50.2 / 55.2	37 / 14.4"
VEGA 65	608055	76 / 30"	76 / 30"	2.7 / 1.1"	15.5 / 34.2	12 / 174	1010 / 35.67	65.2 / 71.7	41 / 16.3"
VEGA 80	608056	84 / 33"	84 / 33"	2.7 / 1.1"	19 / 41.9	12 / 174	1381 / 48.77	80.2 / 88.2	46 / 17.9"
VEGA 100	608057	93 / 36.5"	93 / 36.5"	2.7 / 1.1"	23.3 / 51.4	12 / 174	1895 / 66.92	100.2 / 110.2	51 / 20.1"

TECHNICAL DATA

TYPE	PART NUMBER	DIMENSIONS			WEIGHT	WORKING PRESSURE	AIR REQUIREMENT	MAX. LIFTING CAPACITY	MAX. LIFTING HEIGHT
		LENGTH	WIDTH	HEIGHT					
		[cm] / [inch]	[cm] / [inch]	[cm] / [inch]	[kg] / [lbs]	[bar] / [psi]	[l] / [cu.ft.]	[t] / [US Tons]	[cm] / [inch]
NOVA 2	608061	15 / 6"	15 / 6"	2.2 / 0.9"	0.5 / 1.2	15 / 218	5.2 / 0.18	1.7 / 1.9	8 / 3"
NOVA 6	608062	23.5 / 9.2"	23.5 / 9.2"	2.2 / 0.9"	1.2 / 3	15 / 218	25.8 / 0.91	6.2 / 6.8	13 / 4.9"
NOVA 13	608063	32 / 12.6"	32 / 12.6"	2.5 / 1"	2.5 / 5.5	15 / 218	73.2 / 2.59	12.3 / 13.5	17 / 6.9"
NOVA 21	608064	40 / 15.7"	40 / 15.7"	2.5 / 1"	4 / 8.8	15 / 218	152 / 5.37	20.5 / 22.6	22 / 8.5"
NOVA 31	608065	48 / 18.9"	48 / 18.9"	2.5 / 1"	5.7 / 12.6	15 / 218	273.4 / 9.66	31.2 / 34.3	26 / 10.4"
NOVA 41	608066	55 / 22"	55 / 22"	2.5 / 1"	7.5 / 16.5	15 / 218	422 / 14.9	41.3 / 45.4	30 / 11.9"
NOVA 51	608067	61 / 24"	61 / 24"	2.5 / 1"	9.3 / 20.5	15 / 218	585 / 20.66	51.4 / 56.5	34 / 13.2"
NOVA 63	608068	67 / 26.4"	67 / 26.4"	2.5 / 1"	11.2 / 24.7	15 / 218	786 / 27.76	63.2 / 69.5	37 / 14.4"
NOVA 81	608069	76 / 30"	76 / 30"	2.7 / 1.1"	15.5 / 34.2	15 / 218	1167 / 41.21	81.5 / 89.7	41 / 16.3"
NOVA 100	608070	84 / 33"	84 / 33"	2.7 / 1.1"	19 / 41.9	15 / 218	1595 / 56.33	100.3 / 110.3	46 / 17.9"

15
BAR



SERVICE DEPARTMENT

A SMALL INVESTMENT THAT DELIVERS TREMENDOUS BENEFITS.

ENSURE YOUR EQUIPMENT IS ALWAYS SITUATED FOR OPTIMAL EFFICIENCY AND OPERATIONS THROUGH ESI'S WELL KNOWN AND PROVEN YEARLY PREVENTATIVE MAINTENANCE SERVICE PROGRAM OPTIONS.

Rescue tools more than many other types of equipment must be reliable and perform well under all circumstances. To ensure the reliability and safe operation of your products during their whole lifespan, a schedule of periodic tool maintenance is necessary.

ADVANTAGES

A 1-YEAR FREE SERVICE CONTRACT IS INCLUDED WITH ANY TOOL PURCHASED FROM ESI EQUIPMENT, INC

- ▶ Having an ESI Service Contract ensures all of Holmatro's offered Warranties coverage
- ▶ Arms your members with confidence knowing your tools are properly maintained and mission-ready
- ▶ Allows your tools to work longer and makes your investment last longer
- ▶ ESI Service Technicians have their own spare parts in stock (and quick access to the large inventory at Holmatro) which minimizes downtime of your tools
- ▶ Technicians are factory trained, know the latest technological developments and have direct contact with Holmatro factory staff; they are the best rescue tool service specialists in the market
- ▶ Emergency Tool Services are included in various available service agreements - If called, ESI has a guaranteed response time of 36 hours
- ▶ If unable to repair on site a loaner tool (when available) will be provided to keep you in service. Save costs over time -you will not be charged for travel time, mileage, or labor while under contract. You will be charged only for parts required for the repair.

COMPREHENSIVE HOLMATRO PREVENTATIVE MAINTENANCE SERVICE PROGRAM

ESI Equipment's Comprehensive HOLMATRO Preventative Maintenance Service Program is designed to incorporate all necessary routine maintenance all equipment requires in a complete program for the customer. On a charge per unit, this annual comprehensive program offers a complete and thorough service to your HOLMATRO system ensuring that it meets manufacturer's specifications for performance, pressures, and forces. The Comprehensive Service Program includes Inspection, Functional Testing, Repair, Loaner equipment, Service Maintenance, Emergency Service and Record Keeping.

PEACE OF MIND

By servicing and inspecting the system routinely, the chances of a system or tool failure are greatly reduced giving you peace of mind knowing that the users and the community being served are provided with properly maintained equipment to the best possible level. Using high quality ethanol-free fuel and industry leading technology, ESI's full time factory-trained & certified Technicians can handle routine maintenance for you and keep costly and unnecessary issues to a minimum.

CONTACT US FOR MORE INFORMATION ON ESI'S SERVICE CONTRACTS AND REMEMBER BEST PRACTICES FOR ROUTINE MAINTENANCE ON YOUR RESCUE EQUIPMENT SO YOU ARE ALWAYS MISSION-READY.



ESI

EQUIPMENT INC.

HEALTH & SAFETY DIVISION

ESI

EQUIPMENT INC



HEALTH & SAFETY DIVISION

Sentinel

Are carcinogen bi-products and virus containments a concern? Create a clean and safer environment in your vehicle, turn your truck cab or station with Sentinel products that continuously seek out and neutralize. Safe, clean, without filter or harmful lights. Would monitoring the station air be useful in maintaining a clean/safe environment? If so, then the Sentinel IQ is the product of choice.



NPBI Technology

The Sentinel system delivers a cleaner cab by actively reducing harmful contaminants in Emergency Vehicles. Its patented Needlepoint Bipolar Ionization (NPBI™) technology uses a precise electronic charge to generate ions that neutralize VOCs, viruses, and bacteria, and even sterilize mold. It is safe for humans and even pets while in operation as it produces! No Ozone or harmful byproducts thereby allowing units to remain in service longer.



Aseptic Plus+

Breakthrough Technology Aseptic Plus+ is an ecologically safe alternative to noxious chemicals that is fragrance-free, pH balanced at 8.5, and produces no harmful byproducts. Effective on 20+ viruses and bacteria—it can be used throughout interior environments to clean and disinfect air, surfaces, fabrics, and furnishings, and eliminate allergens and tough odors. Eliminates odors, mold, and mildew. Perfect in sprayers for use throughout homes, hospitals, schools, assisted living communities, athletic facilities, restaurants, cafeterias, food service facilities, cruise ships, hotels, etc. Available in 1-gallon bottle, 5-gallon pail, and 55-gallon drum. Foggers also available

Learn more about ESI Equipment's Health & Safety Division by visiting us online at www.ESIequipment.com



remove debris and particulates before you take off your gear with **SUDZ-IT**

wash your gear with **SAFETY SUDZ**

ride back to the station with **THE SENTINEL** in your cab

shower with **EMBER SUDS**

monitor the Air Quality in your station and your cab with **THE SENTINEL IQ**

SERVICES

01 The Sentinel IQ

Air monitoring and purification

02 Ember Sudz

All-natural, hand-crafted, activated charcoal-based soap. Specifically formulated to exfoliate and absorb toxins and carcinogen

03 Sentinel Systems

Actively neutralize harmful VOCs, viruses, bacteria, and even sterilizes mold

04 Safety Sudz

Gear Liquid Detergent formulated to clean the most harmful hydrocarbons and soils. Gentle on turn out gear

05 Sudz It

Dual Use Wetting System or: Wet Mitigation and Overhaul

Toxic Suppression

Your Turnkey Solution to Post Fire Safety

DEDICATED TO YOUR SAFETY

TOXIC SUPPRESSION is more than just products. We strive to earn and keep your trust by directing all our resources towards achieving our most important goal: **YOUR TOTAL SAFETY**

THE SENTINEL IQ

First Responders are exposed to particulates, VOC's, and pathogens on calls in the field. What has been an unknown is how much the chronic exposure levels are and where they occur in station and in emergency vehicle. UNTIL NOW...

Sentinel IQ powered by Senseware is an accurate indoor air quality monitoring system that alerts you on the level and nature of pollution in your air, enabling corrective action.



The Sentinel IQ, powered by Senseware is an accurate indoor air quality monitoring system that alerts you on the level and nature of pollution in your air, enabling corrective action.





EMBER SUDS DETOX FIREFIGHTER SOAP

All-natural soap bar that contains a fine layer of pumice for gently scrubbing the skin and assisting in the daily defense against harmful elements. Most over-the-counter soaps have moisturizers that are designed to pull moisture into the skin. This works against the common goal to remove carcinogens. Ember Suds is charged with charcoal and fine pumice to remove soot and is specially designed for post-fire detox.



SAFETY SUDS CLEANER

Safety Suds Bunker Gear Liquid Detergent safely cleans all your gear components. Formulated to clean the most harmful hydrocarbons and soils. Gentle on your turnout gear and station wear. Used in the final rinse, BacStop™ continually eliminates 99.9% of infectious bacteria and remains active on textile surface.



SUDZ-IT UTILITY RINSE

Dual-use wetting system for wet mitigation and overhaul. Using a wet soap-based approach to preliminary exposure reduction has shown up to 85% reduction in fire debris and particulates. SUDZ-IT Utility Rinse System can easily be utilized by attaching the quick connect hose and SUDZ-IT Decon Brush. The SUDZ-IT Utility Rinse System produces water with reduced surface tension which can penetrate up to 7 times more than water alone.



SENTINEL 2500

Ideal for any room without adequate ventilation or as a portable solution for anywhere people may congregate or assemble.

- Model: Sentinel2500 CFM
- Airflow: 2500 CFM
- Dimensions: 11.4" x 8.2" x 3.9"
- Weight: 31lbs
- Sound: 45dB
- Includes: Sentinel 2500 unit w/ 110 V AC Power Plug



SENTINEL 300

Ideal for fire apparatus, ambulances, and law enforcement vehicles.

- Model: Sentinel300 CFM
- Input Voltage: Input 12V or 24V DV
- Input Voltage Draw: 4A @ 12V or 2A @ 24V DC
- Dimensions: 11.4" x 8.2" x 3.9" (29 x 20.8 x 9.9 cm)
- Weight: 8lbs (3.63 kg)
- Sound: 45dB
- Includes: Purification unit, mounting bracket, cigarette plug power adaptor with 3 Pin Deutsch Plug, constant run, or 1-hour timer.
- Air Flow: 300 CFM



SENTINEL 100

Ideal for fire apparatus, ambulances, and law enforcement vehicles.

- Model: Sentinel100 CFM Unit
- Dimensions: 6" x 8" x 6" (15.2 x 20.3 x 15.2 cm)
- Weight: 3.8lbs (3.63 kg)
- Sound: 58-72 dB
- Air Flow: 100 CFM
- Includes: Sentinel 100, push button test light, indicating unit is operational, 6 foot cord with 3 Pin Deutsch plug, air box with a Liquid drain, so spills do not enter the units electronics, constant run or 1-hour timer.

A DIVISION OF ESI EQUIPMENT, INC

JYD
JUNKYARD DOG
industries

**FORGET CUMBERSOME,
COMPLICATED, CRIBBING.**
JUNKYARD DOG INDUSTRIES
RESCUE STRUTS HAVE PROVEN,
OVER AND OVER, THAT IN-VEHICLE
RESCUE SITUATIONS WHEN TIME
IS CRITICAL, LESS EQUIPMENT
DEFINITELY DOES DO MORE.



**NEW BERRY
COMPLIANT
STRAPS!**

JUNKYARD DOG RESCUE STRUTS

These simple, self-contained, lightweight rescue struts work on the "tension buttress" principle for quick and secure deployment. They can allow even a single firefighter to stabilize a vehicle faster, better, and often far more easily than a team of rescuers with a truck full of cribbing and connectors. Junkyard Dog Industries strut systems come in two styles each with multiple, adjustable sizes.

ADVANTAGES

- ▶ Less equipment does more work
- ▶ One rescuer can carry two complete struts
- ▶ Struts are easily applied by one rescuer
- ▶ Lower cost than many alternative systems
- ▶ Lighter, more compact design
- ▶ Replaces quantities of cumbersome wood cribbing
- ▶ All accessories are attached to the strut

RESCUE STRUTS STYLES

ZSTRUT

Zipnut® Style

Using Patented ZipNut® Technology, JYD's ZSTRUT Style Rescue Struts are setting industry standards. The ZSTRUT is engineered to extend by simply pulling up the extension rod to desired height. Eliminating the need for locking pins allows for quicker deployment and adjustability with the ability to follow lifts. ZStrut Zipnut® technology makes adjustments during lifts simple — the collar rotates on the threaded rod to tighten fit. To retract just pull the collar up.



XTEND

Pin Style

The XTEND Style Rescue struts from are your pin-placement system solution for your stabilization. Self-Contained, lightweight and easy to use for quick and secure deployment. XTEND Rescue Struts use heavy duty, top quality, stainless steel aircraft quality Locking Adjustment "T" Pins for quick and secure deployment.



XTEND HD

HEAVY DUTY

The latest addition to the Junkyard Dog Rescue Strut line is the XTEND Heavy Duty Rescue Strut, designed with **twice the strength** but little added weight. At 37 lbs., the XTEND HD is tested at over 20,000 lbs. and rated 2:1 with a 10,000 lbs. Capacity (WLL) at Full Extension!

XTEND HD STRUT SET: PART # JYD-XHD L



STRUT COMPONENTS

REMOVABLE HEADS

Every Strut includes two removable heads: the Angled Head for inserting and gripping in angle positions up to 90 degrees and the Pointed Head for placing in available holes or created holes in sheet metal

ANCHOR PICKET

The Floating Claw Hook can be used as a fastening point for the ratchet strap by placing it into an existing hole in the frame, around a structural component of the car, or by creating a hole in the metal structure by use of a step-bit. The ratchet strap can be doubled back for added strength.

CARRYING HANDLE

The Strut Carrying Handle is specifically engineered to carry the strut in a balanced position allowing for two struts to easily be carried by one individual. The Anchor Picket is built into the carrying handle.

ACCESSORY BAG

The accessory bag, included with every strut, is secured to the strut handle using Velcro. It carries all accessories when not in use and is intentionally sized to conform with the base plate, not to extend further, making compartment-mounting simple, when mounted in compartment.

RATCHET STRAP

Berry compliant, made in the USA, the Ratchet Strap is used to latch onto a component of the vehicle with a single round turn, multiple wraps, a "girth" hitch or by using the attached claw hook. The axle strap has a 1,300 lb. working load and a 4,000 lbs. breaking strength. *floating claw hook attached*

FLOATING CLAW HOOK

The Floating Claw Hook can be used as a fastening point for the ratchet strap by placing it into an existing hole in the frame, around a structural component of the car, or by creating a hole in the metal structure by use of a step-bit. The ratchet strap can be doubled back for added strength.

AXLE STRAP

Berry compliant, made in the USA, the axle strap is used to lash onto a component of the vehicle with a single round turn, multiple wraps, a "girth" hitch or by using the attached claw hook. The axle strap has a 1,300 lb. working load and a 4,000 lb. breaking strength. *Floating claw hook attached*

BASE PLATE

The body of the strut is mounted on a base plate capable of pivoting 180 degrees for proper positioning and convenient storage.

PRODUCT	Retracted Length	Maximum Extension	Weight	WLL	Safety Factor	WLL Ranges	Includes
XTEND - Small	27 inches	42 inches	19 lbs.	5,000 lbs.	2:1	FULL EXTENSION	Accessory Bag, Ratchet strap with floating claw hook, Axle strap with floating claw hook, Angled head, Witches hat head and Picket included with each strut The Heavy Duty Strut comes with a larger accessory bag containing all accessories.
XTEND - Medium	39 inches	64 inches	24 lbs.	5,000 lbs.	2:1	MID EXTENSION	
XTEND - Large	51 inches	81 inches	27 lbs.	5,000 lbs.	2:1	MID EXTENSION	
XTEND - HD	51 inches	81 inches	37 lbs.	10,000 lbs.	2:1	FULL EXTENSION	
ZSTRUT - Small	27 inches	42 inches	24 lbs.	5,000 lbs.	2:1	FULL EXTENSION	Floating Claw Hook
ZSTRUT - Medium	39 inches	64 inches	29 lbs.	5,000 lbs.	2:1	MID EXTENSION	
ZSTRUT - Large	51 inches	81 inches	32 lbs.	5,000 lbs.	2:1	MID EXTENSION	
Kinedyne Ratchet Strap	N/A	10 feet	-	1,300 lbs.	3:1	-	
Kinedyne Axle Strap	N/A	2 feet	-	1,300 lbs.	3:1	-	Floating Claw Hook
Kinedyne Ratchet Strap *Heavy Duty*	N/A	10 feet	-	3,330 lbs.	3:1	-	
Kinedyne Axle Strap *Heavy Duty*	N/A	2 feet	-	3,330 lbs.	3:1	-	





JYD SHORT STRUT

Serial # 40471
Junkyard Dig Industries
441 Mountain Rd. Suite 4
Horseshoe, Pa. 15040 USA
www.junkyarddigindustries.com

JYD SHORT STRUT

Serial # 40471
Junkyard Dig Industries
441 Mountain Rd. Suite 4
Horseshoe, Pa. 15040 USA
www.junkyarddigindustries.com

Serial # 40471
Junkyard Dig Industries
441 Mountain Rd. Suite 4
Horseshoe, Pa. 15040 USA
www.junkyarddigindustries.com

SETS VS SYSTEMS

RESCUE STRUT SETS

All Junkyard Dog Rescue Struts are sold as a set of two. All Strut sets come with X2 Struts, X2 Point Heads, X2 Angled Heads, X2 Accessories Pouches, X2 pickets, X2 Ratchet Straps with floating claw hooks, and X2 Axle Straps with floating claw hooks.

Rescue Strut Sets: SMALL

XTEND Part #: JYD-XRS S

ZSTRUT Part #: JYD-ZRS S

Rescue Strut Set: MEDIUM

XTEND Part #: JYD-XRS M

ZSTRUT Part #: JYD-ZRS M

Rescue Strut Set: LARGE

XTEND Part #: JYD-XRS L

ZSTRUT Part #: JYD-ZRS L

XTEND HD Heavy Duty Strut Set

Part #: JYD-XHD L



RESCUE STRUT SYSTEMS

All Junkyard Dog Rescue Strut Systems consist of a combination of two sets in the size of your choice (x4 total struts).

SMALL + LARGE SYSTEM:

Includes (x2) SM & (x2) LG

ZSTRUT Part#: JYD-ZRS SYS

XTEND Part#: JYD-XRS SYS

SMALL + MEDIUM SYSTEM

Includes (x2) SM & (x2) MD

ZSTRUT Part#: JYD-ZRS SMMD

XTEND Part#: JYD-XRS SMMD

MEDIUM + LARGE SYSTEM

Includes (x2) M & (x2) LG

ZSTRUT Part#: JYD-ZRS MDLG

XTEND Part#: JYD-XRS MDLG



STANDARD STRUT ACCESSORY BAG



A Strut Accessory Bag is included with each strut and holds the following:



HEAVY DUTY STRUT SET ACCESSORY BAG

Heavy Duty Strut Accessories for both struts included in a set are all located in a single, easy to carry shoulder Bag included with your purchase.



A DIVISION OF ESI EQUIPMENT, INC.

JYD
JUNKYARD DOG
industries



SIDEWINDER

SIDEWINDER

Part #: JYD-SW-K

The SIDEWINDER is designed for rescue operation to either stabilize or lift an intended load. A choice of heads gives a choice of smooth or aggressive action against the load. Pivot head provides better surface contact on angled loads. The smooth operating drive train provides ease of operation - manually or by a powered impact tool. In operation, the SIDEWINDER increases in strength as it is extended.

Third Party Tested to a Rated Weight up to 7,500 lbs.

Engineered Scissor Operation
Specifically designed for Rescue Work

Pivoting head can adjust to sloping angles for quick action

Single head design for quicker, simpler operation

Can be operated manually or with power tools

Pivoting Carry-Handle for easy portability

Roller Bearings for smoother operation

Enclosed Threaded Rod

Built in clevis designed specifically to secure a Ratchet Strap

Polymer Coated Bottom designed with wide base for stability



Force label and chart for calculating load limits

Standard Kit Includes:

- (1) Sidewinder
- Combination Flat head & Pointed Head
- (1) Speedy Wrench
- (1) Universal

Stabilizing & Lifting on All Fours

The Sidewinder can be used for quick 2 or 4 point stabilization. The Sidewinder eliminates the need to deflate the tires by releasing the weight on the suspension. This accomplishes a partial or total lift with ease.

Stabilizing & Lifting a Side Rollover

When Used in Conjunction with other stabilization devices, the Sidewinder's pivoting heads can adjust to sloping angles for quick action. Tethered to a strut, a vehicle can be lifted using the Sidewinder.

Stabilizing & Lifting a Roof Rollover

Using the Sidewinder in a pair under the roof rail, allows for efficient stabilization. Lifting the rear upward becomes faster & more effective. Placing the sidewinder under the A-Post/Hood area allows you to lift the front end

OTHER APPLICATIONS

The Sidewinder is primarily designed for automobile use. Other applications exist, such as in rescue operations including USAR and special operations.



STABILIZATION KITS

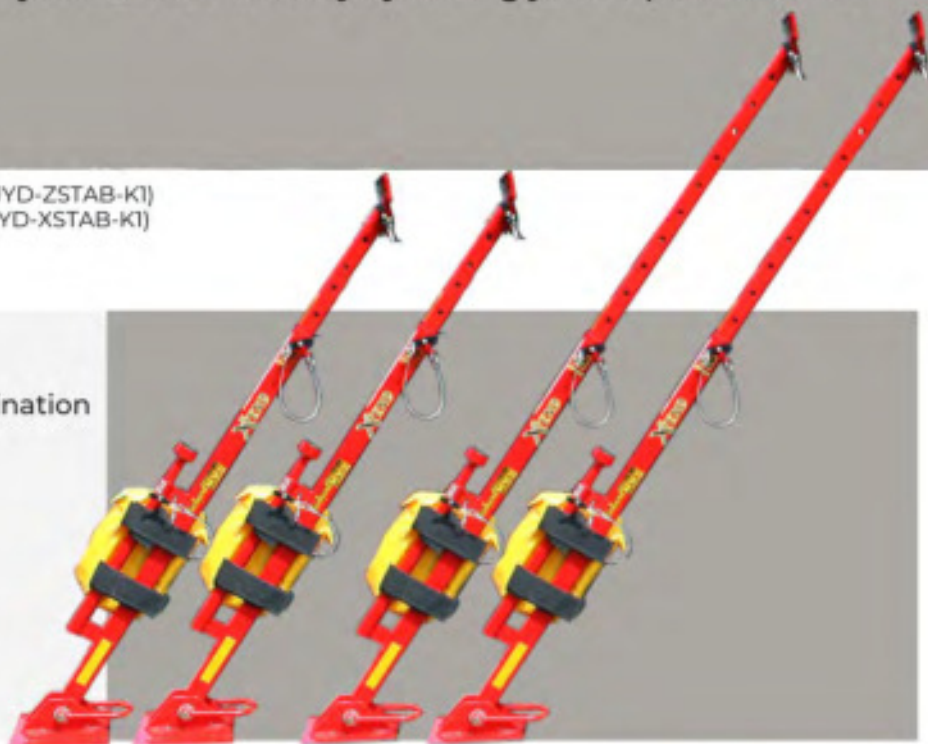
Everything you need for conventional and unconventional stabilization needs, all in one convenient kit. Do a quick 2- or 4-point stabilization with the included Sidewinder Jacks and accomplish a partial or total lift with ease, or add the Struts in conjunction with the Sidewinder to stabilize and lift in a rollover scenario. The Cleat Base guarantees your Struts and Sidewinder grip on off-road/uncertain surfaces when you need it. The Include Milwaukee Kit consists of intentionally selected M18 powered tools and components such as a drill bit to create purchase points and an impact wrench as an alternative method of deployment for the Sidewinder Jack. Choose the type of strut system that works for you – systems are available for both XTENDS and ZSTRUT Style Rescue Struts. Approach any scenario confidently by arming your department with one of our Stabilization Kits.

KIT #1

ZSTRUT Stabilizing Kit #1 (Part #: JYD-ZSTAB-K1)
XTEND Stabilizing Kit #1 (Part #: JYD-XSTAB-K1)

(2) ZSTRUT or XTEND Strut System

- (4) Rescue Struts—Choose any size combination
- (4) Witches Hat (Pointed Heads)
- (4) 90 Degree Heads
- (4) Accessory Pouches
- (4) Pickets
- (4) Ratchet Straps with floating J hooks
- (4) Axle Straps with floating J hooks

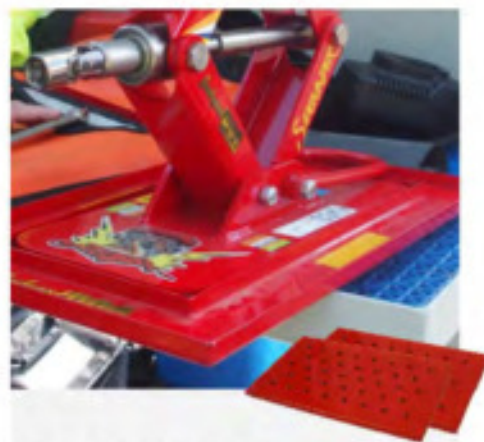


(2) SIDEWINDER JACK KITS



(1) MILWAUKEE DRILL KIT #2

See what's included on page 56



(2) CLEAT BASES

KIT #2

Upgrade your stabilization kit to KIT #2 and get x4 Sidewinder Jack Kits!

- (2) ZSTRUT OR XTEND STRUT SYSTEM**
- (4) SIDEWINDER JACK KITS**

- (1) MILWAUKEE DRILL KIT #2**
- (2) CLEAT BASES**

ZSTRUT Stabilizing Kit #2 (Part #: JYD-ZSTAB-K2)
XTEND Stabilizing Kit #2 (Part #: JYD-XSTAB-K2)

STABILIZATION ACCESSORIES



MINI-PULLER KIT

JYD-MP-K

Originally designed for foot entrapment by pedals, The Mini Puller Kit features a 1/2 Ton Come Along with a compact, lightweight carbon steel design and accompanying accessory chains. The kit Includes:

- (1) Mini Lever Puller
 - 1/2 Ton Come Along (1,000 lbs.)
 - Compact, Lightweight Carbon Steel Design
 - Non-Slip Rubber Handle
 - High output, Short Handle for Tight Spaces
 - 5 ft., Grade 100, Nickel Plated Load Chain
 - Free Chain Mechanism
 - Load Chain Guide for Smooth Operation
 - Both Hooks Have Notched Safety Latches
 - Meets ASME b30, Every Hoist is Tested to 125% of Rated Capacity
- (1) Accessory Chain
 - 4' x 9/32" Grade 100 Adjustable Anchor Chain
 - Tagged and Certified
- (1) Labeled Carrying Bag



DOGGIE BAG

JYD-475

Equip yourself with 9 different attachment points all readily available in one durable stabilization accessory shoulder bag with JYD Industries' Doggie Bag. The uniquely engineered Doggie Bag is designed as an economical solution for responders to conveniently carry specifically selected components to assist during stabilization operations, as well as to work seamlessly with our Rescue Struts. The Doggie Bag Accessory Kit Includes:

- (2) Ratchet Straps with 20' of Webbing (Blue)
- (2) Axle Straps (Blue)
- (2) Open Hook Straps (Blue)
- (2) Cluster Hooks
- (1) C-Hook on Webbing

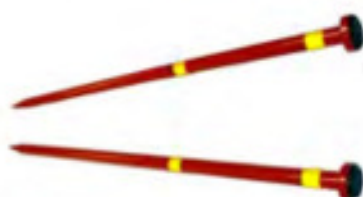


R.I.T. Lift Kit

ESI-RKBK

Self-contained and easily deployed, Junkyard Dog Industries' RIT Lift Kit keeps you organized during rapid intervention situations. When time is of the essence, have everything you need in one kit, ready to go. Simply, place the bags where they need to go, turn on the bottle and start to lift.

- (2) SavaTech Ten-Ton Lifting Bags
- (1) Small Compressed Air Cylinder
- (1) Pre-Set Regulator
- (1) 20' Controller Supply Line
- (2) 20' Bag Supply Lines with Relief Valve and Shut-Off Valve
- (1) Dual Controller with Gauges & Relief Valve
- (1) Custom Carry Bag that Secures Cylinder with Handles & Carry Strap



1" Headed Pickets

JYD-20068

- Powder Coated Red Cold Rolled Steel
- Head with Rhino Coating
- Formed Point
- Designed to Meet Rescue Certifications
- 36" Length
- 1" Diameter
- Reflective Bands



CLEAT BASE

JYD-CLBS

- Strut & Sidewinder Accessory
- Designed for Off-Road or Slippery Conditions
- Stainless Steel with Welded Inner Guide
- 14" x 7" Doubles footprint of SideWinder Base
- Strut Base Slides in Guides for Proper Tensioning
- Stamped Bottom Cleats for Use on Ice or Slippery Roads
- Powder Coated Red for Durability and Visibility

A DIVISION OF ESI EQUIPMENT, INC.

IYD
JUNKYARD DOG
industries

CRIBBING



Turtle Plastics is a world leader in the design and manufacturing of innovative safety stabilization products and interlocking tiles made in the USA from recycled plastic. For over 40 years, our products have been trusted by rescue professionals and industrial experts to keep their workforce safe.

Visit us online see the entire line of Turtle Plastics Cribbing

SIDEWINDER STEP CHOCK KIT



Part #: JYD-SWSTAB-K1

The Sidewinder Stepchock Kit is a simple solution for departments to stabilize and lift in a variety of scenarios with less equipment and more confidence.

Two sidewinders use the space of roughly x2 4x4s but replace 16 4x4s. For an engine rescue, a pumper rescue, anything that you have space restraints, JYD Sidewinders make every bit of sense over piles and piles of wood cribbing.

Kit Includes:

- (2) Turtle Plastics Step Chocks (part #: SC-1)
- (2) Complete Sidewinder Kits (part #: JYD-SW-K).

JYD Industries' popular Cribbing Bag Kit is designed for plastic or wood cribbing can hold up to (9) 4" x 4" pieces. Kit #1 has various Pyramid Locking Lincoln Logs and Plastic Wedges. The three-sided bag allows quick access to the cribbing pieces and keeps them secure during transport.

Kit #1 Includes

Part #: JYD-CRB-K1

- (8) 4X4X18 Pyramid Cribbing
- (4) 2"x4"x12" Wedges
- (1) JYD Cribbing Bag

Kit #2 Includes

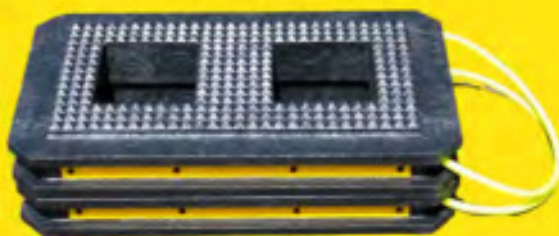
Part #: JYD-CRB-K2

- (6) 4X4X18" Pyramid Cribbing
- (4) 2X4X18" Pyramid Cribbing
- (4) 2X4X18 Pyramid Face Wedge
- (1) JYD Cribbing Bag

CRIBBING BAG KIT



DOG PAW CRIBBING BLOCKS



Part #: JYD-DP

Dog Paw Cribbing Blocks are stackable, mission built, cribbing, made by Turtle Plastics, designed to use with Junkyard Dog Rescue Struts and Sidewinder Jack

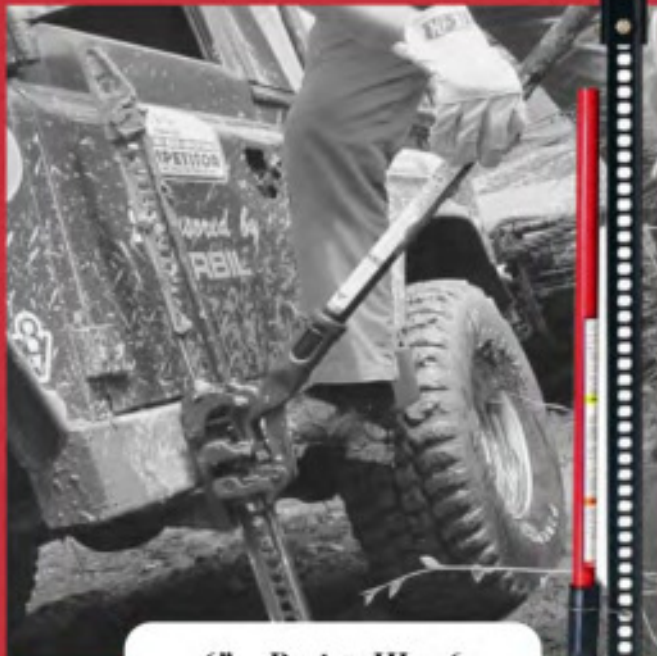
- Works with both the JYD Struts and Sidewinder
- Interlocks on each other to be stacked together
- Pyramid textured bottom designed to work with the Turtle Plastics pyramid cribbing
- Front and back cut-outs, works with a 3.5" Wedge
- Also works with the cleat base
- Can be used to raise the Sidewinder and Strut height for use on SUVs or Pickups

Hi-Lift Cast/Steel Jacks

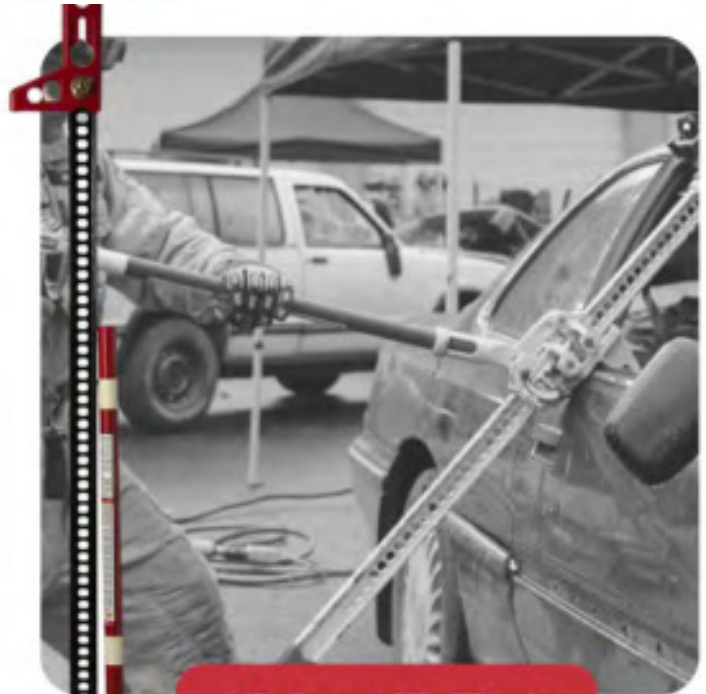
The cast and steel jack is exactly the same as the all-cast jack except that it has 4 stamped high-strength steel parts. We stamp and form the parts in-house; that allows us to offer the jack at a lower price, yet we still maintain the rigid quality standards that every Hi-Lift product must meet.

Features:

- Made of Cast & Stamped Steel Parts
- 7000lb (3175.14kg) Tested Capacity
- Lifts, Winches, Clamps, & More



36" Part #: HL-364
48" Part #: HL-484
60" Part #: HL-604



36" Part #: HL-FR-365
48" Part #: HL-FR-485
60" Part #: HL-FR-605

First Responder Jack By Hi-Lift®

The First Responder Jack offers the same spreading and ramming options used in extrication as the expensive hydraulic tools, yet it requires no fuel or power, which makes it ideal for remote access with limited resources and USAR applications in all types of disasters.

Features:

- Removable top clamp-clevis attachment is rated to the full capacity of the jack for winching, clamping, and spreading
- Durable powder-coated bright yellow main components with fire red actuating pieces
- Safe Use Information including rated load details and operating instructions
- Aggressive 36 sq. inch base provides a safe and effective platform while offering a wide array of rescue options that encompass; cribbing, chains, straps, and has a 360-degree pinnable rotation platform
- Luminescent features for use in IDLH and low light atmospheres
- 7000lb (3175.14kg) Tested Capacity



AJAX SPECIAL CUTTING TOOLS ARE MANUFACTURED FROM THE HIGHEST QUALITY ALLOY STEELS AND ARE MADE SPECIFICALLY FOR GAINING FAST ENTRY INTO WRECKED AUTOMOBILES.

Super Duty Kit 911 RK

AJAX-911-RK



OUR BEST KIT FEATURING OUR MOST POWERFUL AND HARDEST HITTING HAMMER.

- Hammer for .498 inch shank tools
- Retainer
- Regulator
- Ergo Chisel Grip (non-turn)
- 12-in. Moil Point (non-turn)
- Double Blade Panel Cutter (non-turn)
- Kwik Cutter (non-turn)
- 18-in. Kwik Cutter (non-turn)
- Double Blade Panel Cutter (turn-type)
- Kwik Cutter (turn-type)
- 18-in. Kwik Cutter (turn-type)
- 15-ft., 3/8-in. Hose
- 3/8-in. Male Connector (1/4-in. NPT hammer)
- 3/8-in. Male Connector (1/4-in. NPT regulator)
- 3/8-in. Female Coupler (3/8-in. NPT hose)
- Gauge Guard
- 20-in. Steel Kit Box
- Kit Box Liner
- 4-oz. Oil

Heavy Duty Kit 811 RK

AJAX-811-RK



FEATURES HEAVY-DUTY HAMMER WITH LONGER PISTON STROKE FOR MORE POWERFUL CUTTING ACTION. INCLUDES NON-TURN AND TURN-TYPE CHISELS.

- Hammer for .401-in shank tools
- Retainer
- Regulator
- Double Blade Panel Cutter (non-turn)
- Kwik Cutter (non-turn)
- 18-in. Kwik Cutter (non-turn)
- Panel Cutter (turn-type)
- Kwik Cutter (turn-type)
- 18-in. Kwik Cutter (turn-type)
- Ripper Chisel (turn-type)
- Moil Point (turn-type)
- 15-ft., 1/4-in. Hose
- Male Connector (1/4-in. NPT hose and hammer)
- Male Coupler (1/4-in. NPT regulator)
- Female Coupler (1/4-in. NPT hose)
- Gauge Guard
- 20-in. Steel Kit Box
- Kit Box Liner
- 4-oz. Oil

Standard Duty Kit 711 RK

AJAX-711-RK



COMPLETE KIT WITH EVERYTHING NECESSARY TO HOOK UP TO AN AIR TANK AND BEGIN EXTRICATION WORK.

- Hammer for .401-in. shank tools
- Retainer
- Regulator
- Double Blade Panel Cutter (non-turn)
- Kwik Cutter (non-turn)
- 18-in. Kwik Cutter (non-turn)
- Moil Point (turn-type)
- 15-ft., 1/4-in. Hose
- Male Connector (1/4-in. NPT hose and hammer)
- Male Coupler (1/4-in. NPT regulator)
- Female Coupler (1/4-in. NPT hose)
- Gauge Guard
- 20-in. Steel Kit Box
- Kit Box Liner
- 4-oz. Oil



Master Kit 911 RK

AJAX-911-RKM



Master Kit 811 RK

AJAX-811-RKM



Master Kit 711 RK

AJAX-711-RKM



AIR CHISEL KIT BAG

MORE ON PAGE 42





Designed to hold an SCBA cylinder, entire Ajax Air Chisel kit components and be pre-connected ready for service.

JYD-276



CHAINS & WINCHES

CHAINS

PART NUMBER	PRODUCT DESCRIPTION
ESI-20032	10' X 3/8" GRADE 100 W/ GRAB HOOKS
JYD-20031	18' 3/8" GRADE 100 CHAIN W/ SLIP & GRAB HOOK
JYD-20040	28' X 3/8" GRADE 100 WITH GRAB HOOKS
 ESI-20052	5FT X 3/8" G-100 ACCESSORY CHAIN SOSA W/ SLIP & GRAB HOOK
 ESI-20053	10FT X 3/8" G-100 ACCESSORY CHAIN SOSA W/ SLIP & GRAB HOOK
 ESI-20021	5FT X 9/32" G-100 ACCESSORY CHAIN SOSA W/ SLIP & GRAB HOOK
 ESI-20022	10FT X 9/32" G-100 ACCESSORY CHAIN SOSA W/ SLIP & GRAB HOOK
JYD-20047	5FT X 3/8" CHAIN W/ GRAB HOOKS
JYD-20035 G70	J-HOOK 6FT X 5/16" G-70 CHAIN W/ GRAB HOOK CHAIN W/ GRAB HOOK,
JYD-20035 G80	J-HOOK 6FT X 5/16" G-80 CHAIN W/ GRAB HOOK CHAIN W/ GRAB HOOK,
JYD-20039	J-HOOK 10FT X 3/8" G-43 CHAIN W/ CLUSTER HOOK
JYD-20041	J-HOOK 6FT X 3/8" G-70 CHAIN W/ GRAB & MINI J
JYD-20036	C-HOOK 6 FT X 5/16" G-70 CHAIN WITH GRAB HOOK
JYD-20037	CHEATER, 3 LINKS, 28FT X 3/8" G-100 CHAIN (27" SPREADER)
JYD-20038	CHEATER 28" X 3/8" CHAIN G-100 (27" SPREADER)
JYD-20046	CHEATER 1/2" X 32" G-100 W/ GRAB HOOKS (32" SPREADER)
JYD-20034	CLUSTER HOOK SET: W/ GRAB, MINI J, R & T HOOK



Commonly paired with a 3-Ton or 6,000lb Come Along



Commonly paired with a 1.5 Ton or 6,000lb Come Along



Grade 100 blue chain with self closing slip hook and oblong ring with integrated adjustable grab hook.



LEVER HOISTS/COME-ALONG PACKAGES

Standard Lever Hoists

rugged, all steel , compact, perfect for day-to-day operations



Standard 1.5 Ton (3,000lb) Lever Hoist 5ft Chain (ComeAlong) Package

Part No. ESI-20010

PACKAGE INCLUDES:

- 3000 lb. Lever Hoist (Part No. ESI-20005)
- Adjustable 5 ft. by 9/32" grade 100 chain
- Adjustable 10 ft. by 9/32" grade 100 chain

Standard 1.5 Ton (3,000lb) Lever Hoist 5 ft Chain (ComeAlong) Package with Poly Box

Part No. ESI-20015

Standard 3 Ton (6,000lb) Lever Hoist 5ft Chain (ComeAlong) Package

Part No. ESI-20054

PACKAGE INCLUDES:

- 6000 lb. Lever Hoist (Part No. ESI-20051)
- Adjustable 5 ft. by 3/8" grade 100 chain
- Adjustable 10 ft. by 3/8" grade 100 chain

Standard 3 Ton (6,000lb) Lever Hoist 5 ft Chain (ComeAlong) Package with Poly Box

Part No. ESI-20055

Deluxe Lever Hoists

alloy steel, quality-built designed for reliable operations in the toughest conditions

Deluxe 1.5 Ton (3,000lb) Lever Hoist 5ft Chain (ComeAlong) Package

Part No. ESI-20011

PACKAGE INCLUDES:

- 3000 lb. Lever Hoist (Part No. TTP-19679)
- Adjustable 5 ft. by 9/32" grade 100 chain
- Adjustable 10 ft. by 9/32" grade 100 chain

Deluxe 1.5 Ton (3,000lb) Lever Hoist (ComeAlong) Package with Poly Box

Part No. ESI-20016

Deluxe 3 Ton (6,000lb) Lever Hoist 5ft Chain (ComeAlong) Package

Part No. ESI-20057

PACKAGE INCLUDES:

- 6000 lb. Lever Hoist (Part No. TTP-19690)
- Adjustable 5 ft. by 3/8" grade 100 chain
- Adjustable 10 ft. by 3/8" grade 100 chain

Deluxe 3 Ton (6,000lb) Lever Hoist (ComeAlong) Package with Poly Box

Part No. ESI-20058

Deluxe Lever Hoists w/ Overload Devices

optimized safety against unintentional release of load

Deluxe 1.5 Ton (3,000lb) Lever Hoist 5ft Chain w/ Overload Device (ComeAlong) Package

Part No. ESI-20072

PACKAGE INCLUDES:

- 3000 lb. Lever Hoist (Part No. TTP-19680-OD-1)
- Adjustable 5 ft. by 9/32" grade 100 chain
- Adjustable 10 ft. by 9/32" grade 100 chain

Deluxe 1.5 Ton (3,000lb) Lever Hoist w/ Overload Device (ComeAlong) Package with Poly Box

Part No. ESI-20073

Deluxe 3 Ton (6,000lb) Lever Hoist 5ft Chain w/ Overload Device (ComeAlong) Package

Part No. ESI-20074

PACKAGE INCLUDES:

- 6000 lb. Lever Hoist (Part No. TTP-19689-OD)
- Adjustable 5 ft. by 3/8" grade 100 chain
- Adjustable 10 ft. by 3/8" grade 100 chain

Deluxe 3 Ton (6,000lb) Lever Hoist w/ Overload Device (ComeAlong) Package with Poly Box

Part No. ESI-20075

GRIP HOISTS



Useful for dragging, general lifting, tensioning, loading, and unloading, take complete control of your lift and pull operations with one of Junkyard Dog Industries' Grip Hoist Rescue Kits. Part of Junkyard Dog Industries' (a division of ESI Equipment) line of stabilization and lifting products, our Grip Hoist Rescue Kits are available for all the TU Series Hoists (TU17, TU28, and TU32).

Grip Hoist Accessory Kits Include:

2	Anchor Shackle - specific to Grip Hoist
2	10' Round Sling
1	2 Ply 3"X10' Base Recovery strap-tapered ends
1	10ft Grade 100 alloy chain Sling. Master Grab D-Ring to GBK Self Closing hook
1	Multi Purpose Bag

What to know about our Grip Hoist Rescue Kits:

- ◆ This device is essentially a manual portable winch that is also rated for man-lift operations, something a winch is not rated for
- ◆ Give you complete control of lift and pull operations
- ◆ Easily and quickly set up
- ◆ Has the flexibility to be used vertically or horizontally
- ◆ Capable of moving obstructions AND stabilizing
- ◆ Always ready to lift, pull and lower loads
- ◆ Rescue accident victims
- ◆ Remove obstructing trees and debris
- ◆ Tear down walls
- ◆ Manipulate wrecked automobiles and trucks
- ◆ Easily and quickly solve scores of other accident and disaster problems with complete control of your pulling and lifting operations
- ◆ The Grip Hoist Rescue Kits are unique to the industry, made only by Tractel, and part of the ESI Equipment/JYD Industries Product Line.

Individual Griphoist®:

849202460K	TU17 2,000 Pound Griphoist w/60' Cable
01609902460K	TU28 4,000 Pound Griphoist w/60' Cable
03219902460K	TU32 8,000 Pound Griphoist w/50' Cable

Griphoist® Rescue Kits are available for all TU Series and include:

- ◆ Griphoist, Snatch Blocks, 3 Slings, and a large Carrying Case

Visit us online at www.ESIequipment.com for more information, add-ons, and additional accessory kits.





Warn ZEON 10 Winch **with Steel Wire Rope 10,000 lb. Capacity**

WARN Ultimate Performance Winch. A massive protective structure combined with sophisticated operator feedback delivers fast line speeds and long duty cycles. The perfect winch for the serious off-roader.



- Uniquely balanced 10000 pounds winch with synthetic rope and roller fairlead
- Design is consistent throughout the entire winch with the same look on the motor as on the gear side
- Convertible control pack can be attached to winch or remotely mounted allowing for various mounting options
- Black powder-coated finish and stainless steel fasteners and clutch inhibit corrosion
- Large aluminum winch drum is lightweight and reduces rope wear

9.5cti Multi-Mount **WR-685013**

The 12V 9.5cti Multi-Mount packs 9,500 lbs. (4,310 kg) of portable pulling capacity into a sturdy die-cast aluminum body. The Multi-Mount system allows you to use the winch on the front of a vehicle with a WARN front reviver, or at the rear using a standard Class III receiver hitch for maximum winching versatility.



KIT INCLUDES:

- Winch, Quick connect wiring for the front of the vehicle, 125 ft of 5/16" wire rope, Hook, Remote Control on 12' Lead, Hawse Fairlead, Remote

Portable Winch Configuration Option

Mount your Warn Winch to this carrier for a portable Winch configuration. Constructed of black coated Steel

- Multi-Mount Winch Carrier Kit
- Sold Separately
- Requires Assembly



WINCH ACCESSORY KITS



ESI Equipment's popular Winch Training Programs are available for departments and individual members! For more information please give us a call at 1-800-574-8228 or email us at info@esiequipment.com

Offering class-leading accessories to bring you rapid accessibility to the equipment that matches the capacity of your winch so you don't have to worry.

RESCUE WINCH ACCESSORY KIT 8K-12K (ESI-20201-9-12)

OPERATIONAL WITH:
8,000 – 12,000lb Winches
5/16" – 3/8" Wire or Synthetic Rope

INCLUDES:

- (3) 3 Ton Snatch Blocks with Latch
- (5) Anchor Shackles
- (2) 8' Round Slings
- (2) 10' Base Recovery Sling
- (1) 5' Grade 100 Adjustable Chain Sling
- (1) Wheeled Measuring Stick
- (2) Winch Line Dampening Bags
- (1) ESI Grab It Strap
- (2) JYD Industries Carry Bag

RESCUE WINCH ACCESSORY KIT 15K-20K (ESI-20202-15-20)

OPERATIONAL WITH:
15,000 – 20,000lb Winches
3/8" – 1/2" Wire or Synthetic Rope

INCLUDES:

- (3) 4T Snatch Blocks with Latch
- (5) Anchor Shackles
- (2) 8' Round Slings
- (2) 10' Base Recovery Sling
- (1) 5' Grade 100 Adjustable Chain Sling
- (1) Wheeled Measuring Stick
- (2) Winch Line Dampening Bags
- (1) ESI Grab It Strap
- (2) JYD Industries Carry Bag

RESCUE WINCH ACCESSORY KIT 20+ (ESI-20203-20 Plus)

OPERATIONAL WITH:
20,000lb or more Winches
1/2" Wire or Synthetic Rope

INCLUDES:

- (3) 4T Snatch Blocks with Latch
- (5) Anchor Shackles
- (2) 8' Round Slings
- (2) 10' Base Recovery Sling
- (1) 5' Grade 100 Adjustable Chain Sling
- (1) Wheeled Measuring Stick
- (2) Winch Line Dampening Bags
- (1) ESI Grab It Strap
- (2) JYD Industries Carry Bag

ACCESSORIES ARE TO BE USED AT A 4:1 SAFETY FACTOR. CONTACT ESI AT 267-803-1440 EXT. 104 WITH QUESTIONS OR TO SCHEDULE YOUR ESI WINCH TRAINING COURSE.

DILLON DYNAMOMETER (DIL-10K-100)

Tension Measurement Dynamometer
Provides accurate measurements for cabling and wire operations, while increasing safety



WINCHING CHAIN KIT (ESI-WC-KIT-51020)

Vehicle Harness and Rope Extender

INCLUDES:

- 5ft x 5/16" Grade 100 alloy chain Sling. Master Grab D-Ring to GBK Self Closing hook.
- (2) 10ft x 5/16" Grade 100 alloy chain Sling. Master Grab D-Ring to GBK Self Closing hook.
- 20ft x 5/16" Grade 100 alloy chain Sling. Master Grab D-Ring to GBK Self Closing hook.

A DIVISION OF ESI EQUIPMENT, INC.

JYD
JUNKYARD DOG
industries

RESPONDER GEAR BAGS

Material Specifications and Features:

22 oz. Vinyl-Coated Polyester, UV Resistant, Won't Crack in Severe Cold, 100% Waterproof Fabric, Reinforced Wear Points

Multi Purpose Bag

JYD-110



1

The All-Purpose JYD Industries Bag is designed to use for any equipment. The tough bottom provides extra structure to help maintain its shape and from absorbing fluids from the rescue scene. Includes a noncorrosive double zipper, reflective striping, carry handles, and a reinforced shoulder strap.

DIMENSIONS:

22" (W) x 7" (H) x 9.5" (D)

1

Designed to hold an SCBA cylinder & entire Ajax Air Chisel kit components and can be pre-connected ready for service. 3 attached compartments hold: 60-min compressed air cylinder; regulator, air hose & spare bits & air gun w/bit connected to the hose. Hook and Barb enclosures with tabs secure 2 openings and a long tab holds the gun in. A reinforced lid protects the regulator. An opening between the two compartments allows the regulator to stay attached to the cylinder. An adjustable 40" padded shoulder strap connected to metal D-rings and a handle for easy movement. (Air cylinder and air kit not included).

Dimensions:

24" W x 13.5" H x 14" D

2

Rotary Disc Saw Blade Bag

JYD-325



3

This bag is designed to hold up to 3 rotary saw blades in protective compartments made of heavy-duty vinyl-coated polyester. For on-the-go use, either metal, masonry, ordinary material, or the new super aggressive cutting blades can be carried safely and conveniently to the saw. A small exterior pouch can store a blade wrench. Full top overlapping lid with hook & barb closure keeps dirt and moisture out of the bag. Shoulder Strap: 26" Reinforced and padded

Dimensions:

14.5"(w) x 15"(h) x 4"(d)

3

Air Chisel Kit Bag

JYD-276



2

Designed to hold ground line sections of hydraulic rescue tool hose to keep them properly coiled and protect the couplings. The material does not absorb mineral oil hydraulic fluid thus keeping the bag from attracting dirt. A hook & barb strap secures the large opening closed. Two carry handles provide easy maneuverability of hoses, while a handle at the bottom allows quick release of the hose line(s) from the bag. Colors: Orange, Green, Black, Red, or Blue

Dimensions:

21" W x 22" H x 4" W

4

Troll Bag
Compliments the Hi-Rise Bags!
JYD-100



5

Carries supplies typical for hose evolutions: Hydrant adapters; hydrant wrench; other necessary hose or hydrant equipment. A flip lid with hook & barb enclosure allows full access to the bag interior. Inside is a hook & barb enclosed pouch for small equipment. A 57" adjustable shoulder strap secured with metal spring clips on exterior metal rings and an exterior hydrant wrench pouch is included.

Dimensions:

17.5" W x 10" H x 10.5" D

6

Hydraulic Hose Bag

JYD-075



4

Designed to carry additional equipment such as rubber mallets, blind caps, spare wheels, and nozzles that may be required at a standpipe or to extend a hose line. Two double adjustable straps with plastic clips hold the bag and contents together. A reversible inner liner doubles as a cover. Reinforced shoulder strap with a hook & barb enclosed protective cover allows easy mobility. A reinforced bottom and partial sides for durability.

Dimensions:

19.5" W x 10.5" H x 7" D

5

Back Step Bag

JYD-275



6

For plastic or wood cribbing, this bag can hold up to (9) 4" x 4" pieces. This three-sided bag allows quick access to the cribbing pieces but keeps them secure during transport. Two double adjustable straps with plastic clips hold the bag and contents together. A handle at the bottom front for removal from the apparatus compartment. Two small openings in the bottom corners allow moisture run-off. Reinforced bottom for durability. See Kits on page 14

Dimensions:

24" W x 11.5" H x 10" D

7

LHD Wrench Pouch

JYD-125



8

Designed to carry a Sidewinder with an interior pocket for the speed wrench, it's roomy enough to add a battery impact wrench and other accessories. The tough bottom provides extra structure to help maintain its shape and from absorbing fluids from the rescue scene. Includes a noncorrosive double zipper, reflective striping, carry handles, and a reinforced shoulder strap.

Dimensions:

22" W x 7" H x 9.5" D

9

Cribbing Bag

JYD-020



7

Designed to hold a hydrant wrench on the end of a large diameter hose. Three hook & barb connecting straps hold the pouch onto a 3", 4", or 5" hose section. A hook & barb enclosed lid secures the wrench inside. Reinforced bottom for durability.

Dimensions:

23.5" W x 7.5" H

8

Sidewinder Carry Bag

JYD-SW-B



9

This bag is designed to carry 2 Cleatbase, an optional base accessory for Junkyard Dog Rescue Struts & Sidewinder Jack, is designed to hold 2 cleatbases and serves as a convenient and efficient way of transporting bases to a scene as well as storing them within your apparatus compartment for quick deployment. See Cleatbase on page 13.

Dimensions:

21" W x 22" H x 4" W

10

Doggie Bag (bag only)

See complete Doggie Bag on page 13

JYD-475



11

Optional exterior Storage Bags for Junkyard Dog Rescue Struts, available in small and large, designed for protection from environmental conditions. Made from 22 oz. Poly Coated Heavy Duty Vinyl Material, the bags are water resistance and equipped with a rubber sealed entry zipper for added protection. Storage Bags also include reinforced sturdy insert on the bag for additional strength.

Dimensions:

17.5" W x 10" H x 10.5" D

12

Cleat Base Bag

JYD-CLBB



10

Equip yourself with various accessory all readily available in one durable, weather-resistant, shoulder bag with JYD's Doggie bag. This Doggie bag comes with with a fully enclosed lid, pockets for stabilization accessories, and an adjustable shoulder strap. Designed as an economical solution for responders to conveniently carry specifically selected components to assist during the stabilization process, the bag is available with or with out those components. This bag is constructed of 18 & 22 ounces per square yard vinyl-coated polyester so the bag does not absorb fluids and is easily cleaned with mild soap and water with excellent UV resistance. Full Kit, Page 13

11

Strut Exterior Storage Bags with Brackets

JYD-450-L or JYD-450-S



12

Designed for Rapid Intervention Teams to carry spare breathing apparatus to a downed firefighter/rescuer. Two attached compartments hold: A 60 minute compressed air cylinder; A second stage regulator, 30 feet of air hose, and additional rapid intervention equipment to supply a trapped victim. Hook & barb enclosures w/tabs secure the openings to each compartment. A reinforced opening between the 2 compartments permits the hose line to travel from the cylinder to the supply device. An adjustable 40.5" reinforced/padded shoulder strap has metal split-hook spring-loaded fasteners for easy release.

Dimensions:

24"(w) x 13.5"(h) x 14"(d)

13

Crash Bag (bag only)

Complete Bag Crash Kits on page 29
JYD-CB-1



14

Labeled Carrying Bag for the Mini puller Kit, which can be found on page 13.

15

R.I.T. Bag

JYD-020



13

The bag is made of heavy-duty waterproof vinyl with fully wrapped webbing handles. A three-sided-dual zipper allows for quick easy access to the contents. Bright orange color and a large reflective band easily identify the bag. The inside contains a removable, magnetic tool board with pockets for individual tools. A semi-removable divider holds additional large tools

Dimensions:

19" (w) x 15.5" (h) x 4" (d)

14

Mini Puller Bag

Bag Only; see complete kit on page 13

JYD-SW-B



15





1st In Essentials

Extrication Protection Cover Kit

JYD-EPC-K



Create a safer “Hot-Zone” space around an entrapped patient with the Extrication Protection Cover Kit.

Developed for the protection of EMS, Rescue workers, and patients, these products are intended to cover sharp areas where glass fragments or sharp metal ends exist either created by rescuers during the extrication process or because of the crash event. All components included in the Extrication Protection Cover Kit can be purchased individually:

- x3 Post Covers with Hook & Loop (Part: JYD-755)
- x1 24"x 24" Cover with 4 Interior Magnets for Extra Hold (Part: JYD-756)
- x1 24"x 60" Cover with 6 Interior Magnets (Part: JYD-757)
- x1 Carry Bag with Strap and Lid (Part: JYD-758)

Designed to provide protection to an entrapped victim inside a vehicle. The panels have hand-holds for gloved hands to maneuver easily. Clear .125" Poly Carbonate comes in single or double hinged panels. Each panel measure 21" x 24" with reflective tape protection.

- 1 Single Panel
- 1 Double Hinged Panel
- 1 Kovenex Rapid Response Blanket
- 1 weather-resistant carry bag with shoulder strap, pull straps, and enclosure



Single Panel
Part #: JYD-751



Double Panel
Part #: JYD-752



Teardrop Panel
Part #: JYD-754

Patient Protection Panel Kit

JYD-753



Kovenex® Rapid Response Fire Blanket

KOV-RRBCB



The Kovenex® Rapid Response Blanket is a high-performance, flame- and tear- resistant blanket used by extrication professionals and fire rescue teams. It will provide you and your rescue victims the needed protection against fire, intense heat and burn, shattered glass particles and sharp metal edges.

Blanket Specifications:

- Fabric Weight: 10 oz./sq. yd.
- Blanket Size: 57" x 57"
- US Patent No. 6,102,128
- Tested to NFPA performance standards

Blanket with Bag	Blanket Only	Bag Only
Part #: KOV-RRBCB	Part #: KOV-RRBL	Part #: KOV-RRB



CRASH BAG KITS

For a 1st Responder or Rescuer to utilize as a first-in tool at a vehicle crash. This contains the basic tools and equipment to start initial stabilization and quick entry for patient assessment. Made of heavy-duty waterproof vinyl with full wrapped webbing handles. A three-sided dual zipper allows for quick and easy access. Bright orange color and a large reflective band easily identify the bag. Inside contains a removable magnetic tool board with pockets for individual tools. A semi-removable divider holds additional large tools and secures the rescue blanket in place. Over 18 industrial quality tools in one convenient bag.

19" (L) x 15.5" (H) x 4" (W) 13.5 Pounds.



Bag Only
JYD-CB



Standard Crash Bag Kit
with Glas-Master
JYD-CB

- Channellock® 6 in 1 Screwdriver
- Channellock® Cable Cutters
- Channellock® 10" Adjustable Wrench
- Ajax Strip & Peek Pry Tool
- Rescue Shears
- Spring-Ring Window Punch
- Lennox® 12" Hack Saw
- (4) Spare Lennox® Hack Saw Blades
- JYD Industries Seat Belt Cutter
- (4) Tire Valve Deflator/Inflators
- Glas-Master Saw with Center Punch
- Kovenex® Rapid Response Fire Blanket



Elite Crash Bag Kit
with Glass Knife & 12v Drill Kit
JYD-CB-GK

- Channellock® 6 in 1 Screwdriver
- Channellock® Cable Cutters
- Channellock® 10" Adjustable Wrench
- Ajax Strip & Peek Pry Tool
- Rescue Shears
- Spring-Ring Window Punch
- Lennox® 12" Hack Saw
- (4) Spare Lennox® Hack Saw Blades
- JYD Industries Seat Belt Cutter
- (4) Tire Valve Deflator/Inflators
- Kovenex® Rapid Response Fire Blanket
- Glass Knife Head
- M12 Drill Kit—now brushless
 - (2) Lithium Ion Batteries,
 - AC Charger
 - DeWalt Pry Bar



ElitePlus+ Crash Bag Kit
with Glass Knife & 18v Drill Kit
JYD-CB-GK-PLUS

- Channellock® 6 in 1 Screwdriver
- Channellock® Cable Cutters
- Channellock® 10" Adjustable Wrench
- Ajax Strip & Peek Pry Tool
- Rescue Shears
- Spring-Ring Window Punch
- Lennox® 12" Hack Saw
- (4) Spare Lennox® Hack Saw Blades
- JYD Industries Seat Belt Cutter
- (4) Tire Valve Deflator/Inflators
- Kovenex® Rapid Response Fire Blanket
- Glass Knife Head
- M18 Drill Kit
 - (2) Lithium Ion Batteries,
 - AC Charger
 - DeWalt Pry Bar



X-POUCH KITS

INSIDE POUCH:

Channellock® Adjustable Pliers
 Channellock® Cable Cutters
 Channellock® 6-in-1 Screwdriver
 Ajax Strip & Peek Tool
 Stanley® FatMax® Utility Knife w/ Spare Blades
 SWAT-T™ Tourniquet
 JYD™ Seatbelt Cutter

BELOW COVER:

JYD™ Ringed Center Punch
 EMT Trauma Shears
 Streamlight ProPolymer HAZ-LO LED Flashlight

OUTSIDE ZIPPER:

x2 Tire Deflator/Inflators

OUTSIDE SLEEVE:

xSpring Ring Center Punch



X-POUCH, with Components

JYD-XPOUCH-KIT

X-POUCH, bag Only

JYD-XPOUCH-KIT



ORANGE



RED



BLUE



BLACK



PLAIN BLACK

The JYD Industries X-Pouch secures tools comfortably at the rescuer's side, readily available for efficient and effective operations. With JYD's X-POUCH, you'll always be prepared. Available full or empty and comes in variety of colors.

SPECIFICATIONS:

The X Pouch outer shell is built from 1000 Denier DuPont Cordura Nylon for years of rough dependable service. The interior pockets are built with 400 Denier Gray Packcloth for easy and quick deployment of tools, the lighter color material helps during use in low light conditions. 1" elastic on the sides and front of the pouch helps retain tools when the pouch is open or in odd positions. Velcro USA products are utilized to keep the pouch closed when stored, but quickly and easily pull open when tools are needed. A universal belt loop allows for normal carry or with a quick pull of the "drop thigh" position allows the X Pouch to be worn in the tactical mid-thigh position. A 1" leg strap is provided to keep the pouch secured to the user's leg. A zippered pocket on the flap allows the securing of small items. The X Pouch is constructed with 100% American-made materials and includes a Lifetime Warranty and is available with or without the tools.

Available Colors: Orange, Red, Blue, Black, Plain Black,
 Leather Radio Straps Available! Sizes include: Standard, XL, XXL



GLASS KNIFE KITS

JYD Industries' wildly popular Glass Knife, with its' robust design, hardened steel replacement blades, and the flexibility to use with any drill, has proven itself a valuable tool for responders. For today's 1st responders, the addition of laminated glass in newer model vehicles poses a serious challenge. This is a huge factor in why JYD Industries strives to equip you with products and solutions that prepare you for the future of new-car technology and glass management, like The Glass Knife.

The laminated glass cutter that fits any drill.



Glass Knife Head
JYD-GK-GLASSKNIFE



Glass Knife Kit #1
JYD-GK-KIT

- Glass Knife Head
- Pry Bar
- (5) N95 Dust Masks
- Safety Glasses
- Can of Wetting Agent
- Carry Bag



Glass Knife Kit #1
JYD-GK-KIT-2

- Glass Knife Head
- Pry Bar
- (5) N95 Dust Masks
- Safety Glasses
- Can of Wetting Agent
- Carry Bag
- M12 Fuel Brushless Hex Driver kit (Includes Driver, 2 Batteries & Charger)



Glass Knife Kit #3
JYD-GK-KIT-33

- Glass Knife Head
- Pry Bar
- (5) N95 Dust Masks
- Safety Glasses
- Can of Wetting Agent
- Carry Bag
- M18™ Drill
- (2) Lithium Ion Batteries
- AC Charger

The Value

The glass knife and a drill work independently for use in any position. The flexibility to use the Glass knife with any drill and simplicity of attachment makes it a valuable and economical tool for responders.

Reduced Risks

By design, 80% of debris is ejected outside the vehicle compared to a reciprocating saw. This greatly reduces the risk for the patient and the rescuer

Unique Swiveling Capabilities

The Glass Knife will maintain a comfortable position for the operator while allowing for easy maneuvering to perform tight-corner cuts with constant control & little effort. We found the ability to articulate the drill and the head priceless when maneuvering around corners, bent steel, or A-Posts.

Hardened Steel Blades

Effective and durable, the Glass Knife blade's smooth cutting edge made of hardened, ground, and polished steel have an Interference fit – this means the dust and chips do not fall between the blades and the blades don't wear out.



Packexe®



PACKEXE SHARPSWRAP

Packexe® Sharpwrap® is a sharps management tool. This is an easy-to-use product to cover up sharp edges and protect PPE from damage and responders and patients from injury.

Sharpwrap® Kit

ESI-PX-SWK

x4 Sharpwrap® Rolls (4" x 100')

ESI-PX-SWR

x1 Sharpwrap® Handle

ESI-PX-SWH



PACKEXE SMASH

Packexe® SMASH is our original Time-Critical Glass management tool. For use in extrication on all types of glass. Packexe® SMASH holds the glass in place, reducing the risk of injury from glass fragments and dust.

Packexe Smash® Kit:

ESI-PX-SK

SMASH Dispenser

SMASH Perforated Roll 12.25"x164' (fits handle)

SMASH Unperforated Roll 12.25"x164' (Hand application)

Film Cutter, Safety Knife, Squeegee, Cloth, Bag

Packexe Smash Hand Roll®

ESI-PX-HR

Packexe The Edge®

ESI-PX-SED



Safety Kit

JYD-SAFE-K1



X4 KITS COMBINED INTO ONE FOR EASIER OPERATION AND DEPLOYMENT

Everything you need for patient and rescuer protection is conveniently packed into one vinyl-coated polyester bag. Bright orange and striped with reflected tape for high visibility at crash scenes. Multiple pockets placed within and around the outside of the bag allow for easy access to the tools you need.



Packexe® SMASH Kit

ESI-PX-SM

- Dispenser
- SMASH Roll, 12.25" x 164', Perforated Every 4" (Fits Dispenser)
- SMASH Roll, 12.25" x 164', Unperforated (Hand Application)
- Film Cutter
- Safety Knife
- Squeegee
- Micro Fiber Cloth



Patient Protection Panel Kit

JYD-753

- Single Panel
- Teardrop Panel
- Kovenex® Blanket
- Carry Bag



Packexe® Sharpswrap Kit

ESI-PX-SW

- x4 Sharpswarp refill Rolls
- Sharpswarp Handle



Extrication Protection Cover Kit

JYD-EPC-K

- (3) Post Covers with Hook & Loop
- 24" x 24" Cover with 4 Interior Magnets for Extra Hold
- 24" x 60" Cover with 6 Interior Magnets



Spring Ring Window Punch

JYD-20102

Carry Bag (pictured above)

JYD-076

ADDITIONAL OPTION!



Replace the single panel for a double-hinged panel with Safety Kit #2 (JYD-SAFE-K2)



**RUPTURE
SEAL™**
Stops a leak dry

DESIGNED TO STOP FUEL & CHEMICAL LEAKS IN SECONDS.

FASTEST DEPLOYMENT SPEED

Rupture Seal can be deployed in less than 20 seconds. Far faster (and cleaner) than competing products like wooden bungs or screw plugs. In the event of a leak or spill, response time is crucial to reduce environmental impact and cost of cleanup.

HIGHEST PERFORMANCE

When factoring in time of deployment, chemical and fuel compatibility and versatility when it comes to fast on-site solutions requiring little to no training, Rupture Seal clearly is the best in class for plugging leaks.

LOWEST REMOVAL COST

Often overlooked, after a spill is cleaned up the site of the leak needs to be cleaned up and addressed. Rupture Seal simply needs to be cut away and discarded. Competing products such as urethane objects and puddles need to be chiseled away and others require tools (and valuable time) to recover.



MAKE IT PART OF YOUR SPILL RESPONSE EQUIPMENT

Enhance your safety, mitigate your environmental impact, and reduce your liability costs by being prepared when the next spill happens. Visit us online at www.ESlequipment.com to see all Rupture Seal Products.



VP RACING FUEL IS UNMATCHED FOR RELIABLE PERFORMANCE.

ALL YOUR SMALL ENGINE FUEL NEEDS ARE IN STOCK AT ESI EQUIPMENT

ESI's Service Department handles routine preventative maintenance of hydraulic rescue equipment for hundreds of departments, using top-quality SEF fuel in all hydraulic equipment to help keep costly and unnecessary issues to a minimum, as part of our well-known and proven Annual Preventative Maintenance Service Contracts.

VP Racing Fuel Benefits:

- Cuts maintenance costs by eliminating the damage caused by ethanol fuel.
- Eliminates hard starts so you can get to work quickly.
- Eliminates fuel separation that can prevent your equipment from starting up right away.
- Won't attract moisture. That means less corrosion and better reliability over time.

READY WHEN IT COUNTS



HAND TOOLS



We have designed 4 Milwaukee Cordless Power Tool Kits with intentionally selected components to assist you in extrication operations and work seamlessly with Junkyard Dog Industries stabilization equipment. Here's how:

MILWAUKEE KIT#1 Impact Wrench to raise and lower the SideWinder

MILWAUKEE KIT #2 Added drill bits to create purchase points for the struts when necessary

MILWAUKEE KIT #3 is Just drill driver and Sawzaw, incase you need it!

MILWAUKEE KIT #4 Offers you the same operations from Kit 1, plus a Reciprocating Saw for gaining access and an AC/DC charger for use in the station and on the apparatus.

Kit One

Part #: JYD-MIL-K1

- M18™ 1/2" Impact Wrench,
- M18™ Lithium Ion Battery
- 110V Charger



Kit Two

Part #: JYD-MIL-K2

- M18™ Drill Driver
- M18™ 1/2" Impact Wrench
- (2) M18™ Lithium Ion Battery
- 1/4"- 3/4" Step Drill Bit
- 110V Charger
- Tool Bag

Kit Three

Part #: JYD-MIL-K3

- M18™ Drill Driver
- M18™ Sawzall®
- (2) M18™ Lithium Ion Batteries
- 110V Charger
- (2) 6" 10TPI Recip Saw Blades
- (2) 9" 10TPI Recip Saw Blade
- Recip Saw Blade Holder
- 1/4"-3/4" Step Drill Bit
- Tool Bag



Kit Four

Part #: JYD-MIL-K4

- M18™ Drill Driver
- M18™ 1/2" Impact Wrench
- M18™ Sawzall®
- (2) M18™ Lithium Ion Batteries
- 110V Charger
- 1/4"- 3/4" Step Drill Bit
- Recip Saw Blade Holder
- (2) 6" 10TPI Recip Saw Blades
- (2) 9" 10TPI Recip Saw Blades
- Tool Bag



M18™ Cordless 1/2" Compact Impact Wrench with Pin Detent

2XC High Capacity Lithium Ion Battery pack, 1-Hour Charger, Carrying Case

Part #: MIL-2659-22



M18™ Cordless Compact Drill Driver

Includes: 18V Lithium Ion Battery Pack, 18V Lithium Ion Charger, 1/3" 3-Jaw Keyless Chuck

Part #: MIL-2704-22



Sawzall® M18™ Cordless Recip Saw Tool Kit

Sawzall® M18™ Cordless Recip Saw, 18V XC High Capacity Lithium Ion Battery, 1-Hour Charger, General Purpose Sawzall® Blade, Carrying Case

Part #: MIL-2621-21



9 Piece Sawzall® Blade Set

Includes: (2) 6" 5 TPI SAWZALL® Blade, 9" 5 TPI SAWZALL® Blade, (3) 6" 14 TPI Thin Kerf SAWZALL® Blades, (3) 6" 24 TPI Thin Kerf SAWZALL® Blades

Part #: MIL-49-22-1145

Recip Saw Blade Holder Part #: JYD-480



Designed to strap onto any reciprocating saw and carry additional blades. Holds (2) 6" & (2) 9" Reciprocating Blades.

Glas-Master Saw & Center Punch



Glas-Master is a manually operated glass removal tool designed to cut laminated glass windshields as well as newer vehicle side windows.

- FAST & EFFECTIVE– Cuts rescue time significantly
- VERSATILE– Use on fiber-glass, wood, plaster, etc.
- Can be used for underwater rescue
- Offers storage for the SPRING-LOADED CENTER PUNCH

Yellow Part #: WEH-GMM-1-Y, **Orange** Part #: WEH-GMM-1-O
Window Punch Replacement Part #: WEH-GMM-1WP
Standard Replacement Blade Part #: WEH-GMM-1B46

Channellock® 9.5" Cable Cutter Part #: CL-911



The CHANNELLOCK® Cable Cutter cuts up to 4/0 aluminum and 2/0 copper – it is not intended for steel or ACSR use. Uses high-carbon C1080 steel for superior performance on the job and electronic coating for ultimate rust prevention.

Ajax Rescue Tools Strip and Peek Part #: AJAX-674-RT



Trim and molding removing tool is designed to expose the following hazards while preparing to extricate a victim from an automobile accident.

Tire Deflator/Inflators Part #: JYD-CB-15



ESI

Race Track Safety Services



ESI Race Track Safety Services is a Proud Supplier of IMSA supplying safety equipment and training to the track services safety team and the Official Partner of the AMR INDYCAR Safety Team ESI RTSS also assists in the safety team training during regular season and pre-season sessions.

The ESI Race Track Safety Services Division concept came from years of experience providing technical support and training services to on-track teams dating back to 1990 when ESI supported the IndyCar/CART/Champ Car safety teams. ESI is usually behind the scenes supporting track services with safety equipment and training to several safety teams throughout the years.

ESI Race Track Safety Services is dedicated to the continued growth of our international presence with our capabilities and products. ESI's involvement in the ICMS Race Track Safety Program has been featured at The Performance Racing Industry (PRI) Tradeshow.



TRACK AND SERIES AFFILIATIONS



RESPONSE TEAMS & VEHICLES

The RTSS response staff is a group of hand-picked experienced track responders that have worked or currently are with national series or large track crews. Personnel are trained through their series of classes, ESI courses and most carry SFI certifications in Fire/Rescue and/or Jump Medic Response.

TRACK RESPONSE TRAINING

ESI RTSS supports the International Council of Motorsport Sciences (ICMS) programs and was part of the group that initially established the Race Track Safety Program (RTSP). ESI personnel have become SFI certified instructors and travel throughout the US conducting SFI training programs for fire/rescue/EMS responders.

TECHNICAL & EQUIPMENT SUPPORT

ESI Race Track Safety Services provides technical support and equipment to a number of series, sanctioning bodies, and tracks. ESI RTSS's goal is to ensure that track personnel and lifesaving equipment are race-ready at all times during an event. ESI's highly skilled technicians provide preventative maintenance procedures and testing prior to each major event. Personal protective equipment is available for each track responder and our RTSS Support Trailer provides a common space, and a meeting area for first responders.



Enforcer[®] FIREBULL[®]

F3 Fluorine Free Foam



Fire Suppression & Portable CAFS

ESI
EQUIPMENT INC

FIREBULL® F3 FLUORINE FREE FOAM

FB-AB-0005

5 Gallon Pail



FIREBULL F3 Fluorine Free Foam is a seamless transition from AFFF products for fire departments. The most complete and user friendly firefighting agent produced in the world- FIREBULL eliminates all of the long established issues of Class B foams: it will not clog, gum, or corrode foam systems or equipment. FIREBULL offers the simplicity of using one product to extinguish multiple classifications of fire, allowing fire departments to increase their stocking supply by using just one product that serves two purposes. Unlimited Shelf Life.

FIREBULL® CLASS A WETTING FOAM

FB-WA-0005

5 Gallon Pail



Environmentally formulated FIREBULL Class A Foam is the newest generation in non-fluorinated foam. FIREBULL Class A Foam contains ZERO hazardous materials in the formulation; it will not clog, gum, or corrode foam systems and equipment. This environmentally formulated concentrate implements a dramatically changed chemistry compared to most foams. This chemistry enables FIREBULL Class A Foam to be used in all types of foam portioning systems, compressed air foam systems (CAFS, in-line actuators, and standard foam equipment).

FIREBULL® TRAINING FOAM

FB-TF-0005

5 Gallon Pail



Environmentally formulated FIREBULL Training Foam is the newest generation in nonfluorinated foam. FIREBULL Training Foam contains ZERO hazardous materials in the formulation; it will not clog, gum, or corrode foam systems and equipment. This environmentally friendly concentrate implements a dramatically changed chemistry compared to most foams. This chemistry enables FIREBULL Training Foam to be used in all types of foam portioning systems, compressed air foam systems (CAFS, in-line actuators, and standard foam equipment).

Enforcer®

PORTABLE CAFS TECHNOLOGY



MODEL	ENFORCER 3 SUPER DUTY	ENFORCER 3 BACK PACK	ENFORCER 10	ENFORCER 30 SKID
PRE-MIX CAPACITY	3 US Gallons	3 US Gallons	10 US Gallons	30 US Gallons
FINISHED FOAM CAPACITY	60 US Gallons	60 US Gallons	200 US Gallons	600 US Gallons
THROW DISTANCE	45 Feet	45 Feet	45 Feet	45 Feet
DISCHARGE DURATION	1 Minute	1 Minute	2:30 Minutes	7:30 Minutes
DISCHARGE HOSE	4 Ft. x 3/8" Booster	4 Ft. x 3/8" Booster	70 Ft. x 1/2" Booster	70 Ft. x 1/2" Booster
HEIGHT	22.5"	22.5"	22"	32"
WIDTH	13"	13"	22"	30.5"
LENGTH	8.25"	8.25"	26"	26"
EMPTY WEIGHT	23 lb	23 lb	95 lb	136 lb
LOADED WEIGHT	48 lb	48 lb	175 lb	388 lb



MODEL	ENFORCER 60	ENFORCER 60 SKID	ENFORCER 200
PRE-MIX CAPACITY	60 US Gallons	60 US Gallons	200 US Gallons
FINISHED FOAM CAPACITY	1200 US Gallons	1200 US Gallons	4000 US Gallons
THROW DISTANCE	95 Feet	95 Feet	120 Feet
DISCHARGE DURATION	6 Minutes	6 Minutes	20 Minutes
DISCHARGE HOSE	50 Ft. x 1" Lay Flat	50 Ft. x 1" Lay Flat	300' x 1" Booster 50Ft. x 1.5" Lay Flat
HEIGHT	38.5"	30.5"	45"
WIDTH	42"	35"	44"
LENGTH	54.5"	50"	98"
EMPTY WEIGHT	485 lb	238 lb	1200 lb
LOADED WEIGHT	985 lb	747 lb	2800 lb
CERTIFICATIONS	UL 711	UL 711	UL 711

ESI Enforcer Packages

ESI has bundled everything necessary to use Enforcer® and FireAde® as a great firefighting tool! A responder's firefighting needs in one convenient package. **Custom Packages available upon request!**

All the below packages also include an ESI Measuring Cup, a Funnel, and a reference decal



Enforcer 3 Gallon Super Duty CAFS Packages come in a Carry Vessel that houses a Nitrogen Cylinder and a 3' Hose Reel w/ 70' 1/2 line & nozzle, and includes a spare Nitrogen Cylinder, an adapter to Fill Nitrogen Cylinders w/ SCBA Compressor, a 5 gallon pail of Firebull® F3, a Funnel, a Measuring Cup, and a wrench for foam pail.



Enforcer 10 Gallon CAFS Packages come on a platform that houses a Nitrogen Cylinder and a Hose Reel w/ 70' 1/2 line & nozzle, and includes a spare Nitrogen Cylinder, an adapter to Fill Nitrogen Cylinders w/ SCBA Compressor, a 5 gallon pail of Firebull® F3, a Funnel, a Measuring Cup, and a wrench for foam pail.



Enforcer 30 Gallon CAFS SKID Packages comes on a platform and includes: x2 Nitrogen Cylinders, Hose Reel w/ 70' 1/2" Line & Nozzle, Adapter to Fill Nitrogen Cylinders, x2 Additional Nitrogen Cylinders, 5 gallon pail of Firebull® F3, a Funnel, a Measuring Cup, and a Wrench for foam pail.



Enforcer® 60 CAFS Package, SKID Version, includes a 50'- 1" Lay Flat Hose, Adjustable Nozzle, 2-Nitrogen Cylinders, on a Platform (Part: ENF-60-SKID) and includes 2 additional Nitrogen Cylinder (Part: E-60-CY), an Adapter to Fill Nitrogen Cylinder with SCBA Compressor (Part: E-3-ADP), x2 Firebull® F3 5 gallon pails, an ESI Measuring Cup, Funnel, and Decals.



The Enforcer® 200 package comes with an Enforcer® 200 CAFS (Stainless Steel Tank), an 100'- 1" Booster on Reel, a 50' Lay Flat Hose, a Pistol Grip Nozzle w/ Straight Bore Tip, and (2)-300 cu ft Cylinders, all on a Platform (Part: ENF-200), and comes with x5 Firebull® F3 5 gallon pails, an ESI Measuring Cup, Funnel, and Decals.

FireAde® FOAM

FireAde is a personal fire suppression system designed for easy application and extinguishment of fire outdoors and around the house using our signature FireAde firefighting foam. No mess, water-based formula. Effective on Class A and Class B fires (97% of all fires).



FA-16oz Can	16oz Can FireAde Personal Fire Suppression System
FA-22oz Can	22oz Can FireAde Personal Fire Suppression System
FA-30oz Can	30 oz Can FireAde Personal Fire Suppression System
ENF-Holster 16oz can	FireAde Can Holster with belt clip for 16oz

To see all of ESI's Enforcer Packages, visit us online at www.ESIequipment.com.

ESI

EQUIPMENT INC
APPARATUS

TRANSFORMABLE, MISSION-BUILT, RESPONSE VEHICLES.



EVIDENT IN EVERY DETAIL, ESI APPARATUS DIVISION'S RESPONSE VEHICLES ARE THE BRIDGE TO THE FUTURE OF AFFORDABLE, RELIABLE, ADVANCED APPARATUS THAT CAN RESPOND TO ALMOST ANY EVENT AND SAVE LIVES. TODAY, WE OFFER OUR OWN GAME-CHANGING LINE OF APPARATUS: ESI RAPID RESPONSE UNITS (RRU) AND OUR NEW MISSION-BUILT, ALL-TERRAIN OFF-ROAD XTREME RESPONSE UNITS (XRU). WELCOME TO THE NEW ERA OF ENDLESS POSSIBILITIES.

THE TOP 10 REASONS CUSTOMERS INVEST IN ESI RAPID RESPONSE UNITS (RRUS):

- | | | | |
|-----|---|---|-----|
| 1 — | First responders typically engage ESI Equipment when they are struggling to find a highly effective, cost-efficient way to respond to calls while dealing with less manpower & smaller budgets. | Our customers tell us they can respond to 80% of calls with an RRU, saving wear & tear on the more expensive apparatus | — 6 |
| 2 — | Our customers tell us because of the transferability of our units they have a lower cost of ownership & better response times while increasing the versatility of their fleet | Unlike an SUV response unit, the RRU is fully transferable to a different make and model truck, saving the cost & time of redesign at the time of replacement of the vehicle | — 7 |
| 3 — | Pickup truck-based driver training is much easier than traditional apparatus | The design of the RRU makes separating contaminated PPE & personnel easy | — 8 |
| 4 — | The use of an RRU on mutual aid calls for manpower to keep their Engines & Ladder trucks available in a department's home district | With larger storage area, especially compared to that of an SUV or traditional ARE/Leer Cap, there's no longer a need to store equipment in the backseat preventing a loss of personnel carrying capacity | — 9 |
| 5 — | Having the RRU body on a pickup truck bed will give them a superior payload for equipment & personnel than that of an SUV | ESI's design team can help you create a Unit with custom features and detail-oriented compartments mission-specific for your needs | 10 |



"In 2018 and 2019, my department embarked on a project that would meet the communication needs of complex and evolving incidents. Something that was able to respond quicker than a larger piece of apparatus we already owned and on a much smaller scale. When we found ESI Equipment, we quickly realized they would be able to accomplish this type of project and more. Our sales representative, Tom Erwine, was always willing to accommodate our evolving needs and happy to offer solutions from some of their past builds. The end product far surpassed our initial goals and expectations."

Kevin R., Emergency Communications Division Supervisor

RESPONSE SOLUTION

A responder vehicle solution with capabilities that overcomes the refinements faced today - reduced workforce and budgets, aging apparatus, and increased calls. Capable of housing your mission-specific equipment to maximize performance and deployment efficiency needs, whatever they may. Armed with everything needed for immediate rescue/assist capabilities all located inside a weather-resistant, time-tested, transferable cap on any 6ft or 8ft Pick-Up Truck bed giving you a superior payload for equipment /personnel compared to that of an SUV while relieving the workload of the larger, more expensive, apparatus. With the ability to combine equipment from several existing apparatus to allow for more efficient operations, the RRU concept, designed purposefully, can reduce operating costs for a department and save the big trucks for the big jobs where they will always be needed.



TRANSFERABLE

Our customers tell us due to the transferability, they have a lower cost of ownership and better response times while increasing the versatility of their fleet. ESI Rapid Response body-inserts fit any domestic heavy-duty pick-up truck bed (6.5' or 8') including Ford, Chevrolet/GMC, and Dodge, AND are completely transferable. Our unique Shim Kits allow you to transfer your RRU body between truck manufactures (from Dodge to Ford, etc.), taking transferability to a whole other level. The expected lifespan of the RRU body is 15 to 25 years, exceeding the life of 2, sometimes 3 pickup trucks. Once you're finished with the pickup truck, the user can slide the RRU body off and transfer it to another truck OR reuse the untouched pickup bed for utility purposes.

PLUG-AND-PLAY

Specifically engineered to outlive the life of multiple pick-up trucks, ESI Rapid Response Units are purposefully designed to be Plug-and-Play. The Power System includes new lithium-ion battery technology and upgraded Inverter technology featuring PDC Exterior Annunciator and intelligent battery charging system. All wiring (Lighting, Radios, Monitors, HVAC Units, etc.) for the power system is neatly contained in our custom-built PDC boards (Power Distribution Center) mounted inside the body. The PDC board is connected to the truck with one single wiring harness, giving you the ability to simply "unplug" the Cap and transfer it to the next truck, quickly and easily.

ECONOMICAL ADVANTAGE

Departments typically engage with us when they are struggling to find a highly effective, cost efficient way to respond to calls while dealing with less manpower and smaller budgets. Smaller rescue vehicles are filling the need for many departments where a larger truck is above budget restraints and staffing requirements. Less expensive to operate and capable of carrying everything needed for ever-changing responder needs, Rapid Response Unit decreases the number of crew members required and leaves the larger, more expensive truck for a call that requires its use, extending the life of your larger trucks with less wear and tear. The fast and easy transfer of the cap allows the vehicle to be back in service quickly. These units serve as a more economical and efficient response to motor vehicle crashes with lower cost of ownership, better response times, and increased fleet versatility



FLEET VERSATILITY

ESI Rapid Response Units are purpose-built to reduce your operating costs while increasing the versatility of your fleet. Fully Enclosed to ensure maximum protection from the elements, made with lightweight fiberglass to maximize fuel efficiency, and maximized specifically for your performance and deployment needs, however specialized they may be. With endless detail-oriented custom equipment compartments and available cutting edge automation, ESI Rapid Response Units are capable of housing your mission-specific equipment all inside a weather-resistant, time-tested, transferable cap that fits on any 6ft or 8ft Pick-Up Truck bed. Once you're finished with the pickup truck, the user can slide the RRU body off and transfer it to another truck OR reuse the untouched pickup bed for utility purposes, making ESI Rapid Response Units fit almost anywhere in a fleet.

MISSION-BUILT

ESI Designs, fabricates, and installs equipment & accessories to maximize performance and deployment through well thought out and proven, mission-built features and detail-oriented compartments for ever-changing responder needs, arming you with everything needed for immediate rescue and assist capabilities. With a reinforced roof to accommodate such features as light towers, drone launch pads, along with internal structural additions specific to your needs, these units upfitted with custom, mission-specific compartments will maximize response and deployment needs. Increase your efficiency and be readily deployable with affordable, reliable, and mission-built response vehicles.

X TREME RESPONSE UNIT

ESI Apparatus division, dominant in the field of custom purpose-built first responder apparatus, is adding a new and unique innovation to their Rapid Response Unit (RRU) line. Introducing, XRU (Xtreme Response Unit), a highly functional off-road rescue response vehicle designed by TOMCAR to be easy to operate with limited training. The four-wheel independent suspension allows a smooth and comfortable ride over the most rugged terrain and can travel up to 65 MPH. The XRU is transformable to be mission-built for the ever-changing responders' specific needs.

THE ENGINE

YOUR CHOICE OF GAS, ELECTRIC OR HYBRID. TOMCAR is equipped with a rear-mounted gas, diesel or electric engine.

GAS – 1.5L four-cylinder 16 valve engine providing enough power and range for days of work in the field.

ELECTRIC – A fully electric model is available with up to 90KW (120 HP) and optional diesel engine range extenders.

HYBRID – Parallel power train combining 160 HP, 2.1L turbo diesel engine and a 96V, 60HP electric motor.

THE SUSPENSION

Taking you anywhere and back.

Heavy payload? Going over harsh terrain? It's nothing our adjustable Racing Shocks and Eibach Springs with Bump stop can't handle. With a long travel, 4-wheel independent suspension, specifically designed to prevent roll-over and absorb the harshest terrain for extended periods of time.



LOW CENTER OF GRAVITY

Thanks to its unique design, only TOMCAR gives you a very low center of gravity combined with the highest ground clearance of any off-road utility vehicle available.



FORESTRY



URBAN

The last thing you need to worry about, is getting there.



THE FRAME

AN ARMORED "COCOON." TOMCAR's frame is made of over-sized, high grade steel, which is fully welded to create an armored "cocoon" that protects occupants from injury. The undercarriage skid plates are made from aircraft grade aluminum allowing the TOMCAR to glide over the largest of obstacles. All TOMCAR frames come with a lifetime warranty for decades of reliable service.

*Engineered to meet Roll Over Protection Standards of ISO 3471:2008 & compliant with ANSI ROHVA-12011



SAFETY

DESIGNED FOR POWER, ENGINEERED FOR SAFETY.

Beyond its tough steel frame, all TOMCAR models include 4-wheel disk brakes, emergency parking brakes and 4-point safety harnesses. Additional options include; full coverage windshield, a soft canopy top, full or half doors, LED Lighting, a 9,500-pound winch, fire extinguisher, tow bar and aftermarket suspension seats.

GROUND CLEARANCE

AN INDUSTRY LEADING 17" OF GROUND CLEARANCE.

With TOMCAR's whopping 17" of ground clearance, this vehicle is tall enough to float over rocks and debris yet still agile enough to scale stony hillsides. TOMCAR's drive components are shielded by a single piece high grade aluminum skid plate which protects the entire underside of the vehicle.

PAYLOAD

CARRY THE COMPETITION, LITERALLY. TOMCAR boasts a class leading payload of up to 2,700 pounds over 100% standard without compromising the stability, smoothness and safety of the ride.



FIRE/EMS



MEDICAL

ESI APPARATUS DIVISION
Customer Gallery



Response Support Unit
Undisclosed Government Agency



Response Unit
Webb Mills Fire Department



Incident Command Unit
Far Hills Bedminster Fire Department



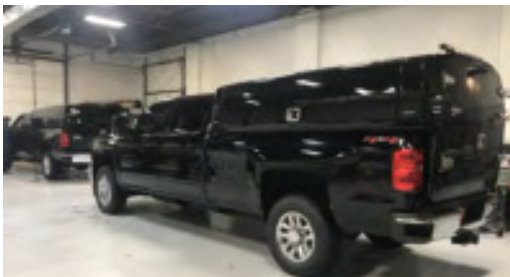
Mobile Intensive Care Units
Saint Clare's Health System



Paramedic Response Units
Virtua Health System



Paramedic Response Units
Wake County EMS



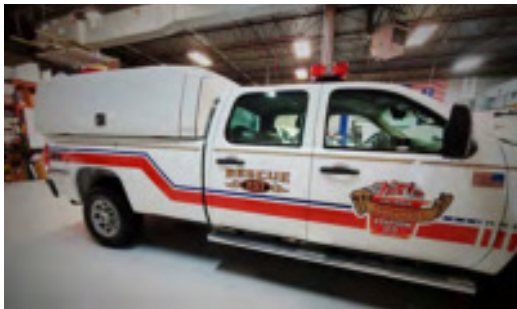
Bomb Squad Units
Undisclosed Government Agency



Crash Scene Investigation Unit
Upper Macungie Police Department



K9 Units
Undisclosed Government Agency



Confined Space Utility Unit
Franklin Township Fire District 3



Command Unit
Albemarle County Fire Rescue



Field Command Unit
Montgomery County, P.A. Tactical Communications Team



Rescue
Heuvelton Volunteer Fire Department



Fire/Rescue Unit
Iron Ridge Fire Department



QRS Units
Sterling Volunteer Rescue Squad (VA)



SUV Paramedic Response Units
Atlantic Mobile Health



Paramedic Intercept Supervisor Unit
South Kingston, R.I. EMS



EMS Supervisor Unit
Queen County of Emergency Services



Response Support Units
Undisclosed Government Agency



Mass Casualty Unit #1
Roanoke City



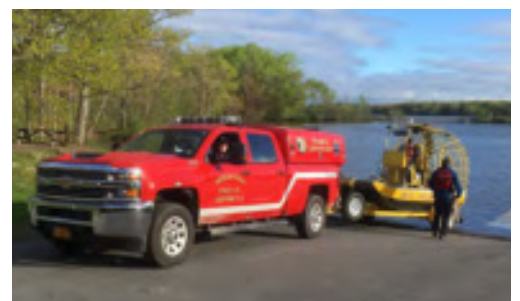
Fire-Police Unit
Slate Hills Fire District (NY)



Haz-Mat Response Vehicle
Middlesex County DE Hazardous Materials Unit (DNRES)



K9 Fire Investigation Unit
Camden County Prosecutors Office



Technical Support EMS Unit
Niskayuna Fire Company



CUSTOM INSTALLATION

Not just where it fits, but where it belongs.

Each and every installation is done with skill and craftsmanship by our talented installation technicians. For us it's all about reliability and loyalty to our customers. Using the best quality materials and components, ESI's work is designed and installed for the lifetime of the apparatus.

ESI Apparatus Division has been designing and installing custom equipment configurations for over 20 years. Driven by a desire to help customers enhance their life saving abilities through maximizing efficiency, ESI has become the most sought after custom installation company in the region.

We design and provide custom-made metal and plastic fabrications using hardware from Performance Advantage Company (PAC), Ziamatic Inc., Turtle Plastics, Sensible Products, Inc., and other companies you've come to trust. We work directly with apparatus manufacturing engineers in customizing interior configurations and designs to ensure space maximization without eliminating resources.





PAC TOOL MOUNTS



HOLMATRO RESCUE TOOLS

These brackets can mount rescue tools vertically, and the upper bracket can be angled to hold the tool up to 45 degrees. Made of high-impact, non-corrosive plastic materials that will not harm the tool, each kit includes the upper handle assembly and base cup.

PART #: ESI-VCHB-NCT
PART #: ESI-VCHB-UL
PART #: ESI-VSHB
PART #: ESI-VCHCTB
PART #: ESI-VCPHB

NCT CUTTERS
UL CUTTERS
SPREADERS
COMBINATION TOOLS
INCLINE CUTTERS & PANTHEON TOOLS



JUNKYARD DOG RESCUE STRUTS & SIDEWINDER JACKS


Designed to be compact, lightweight, and easy to deployable, Junkyard Dog Rescue Struts and Sidewinder Jacks can be mounted in multiple positions in various locations including compartment walls, trays, and dividers, or PAC TRAC Systems with PAC's custom-designed mounting kits.

PART #: JYD-SW-VMK
PART #: JYD-SW HMK
PART #: JYD-1090K

SIDEWINDER JACK VERTICAL MOUNTS
SIDEWINDER JACK HORIZONTAL MOUNTS
RESCUE STRUT MOUNTING KIT (ANY DIRECTION)
INCLUDES: PAC HANDLELOK, JYD BASE HOLDER



Adjustable PAC Tool Mounts

<p>IronsLok HD KIT PAC-K5003-HD</p> 	<p>IronsLok HD can be mounted in a horizontal or vertical position. Drill (2) 17/64" holes in each 33" UNISTRUT in appropriate location. Four hex head bolts and nuts are included for mounting. IronsLok is designed for a 30" Halligan style tool and an 8 lb. or 6 lb. 36" flat head axe. The handle end support/cover module can be relocated on the UNISTRUT if desired. IronsLok is compliant with NFPA 1901 9C requirements.</p>
<p>Adjustamount Kit PAC-K5006</p> 	<p>The Adjustamount is the most versatile mounting system ever produced. Adjustamount can be custom-positioned on UNISTRUT to hold nozzles, folding ladders, hydraulic rescue tools, and much more. High strength injection-molded LOCK-END and CLAMP-END modules, using UNISTRUT CHANNEL NUTS (furnished) allow quick positioning and easy moving if later required. A 9" length of extruded neoprene Channel cushion can be custom cut to the length required and provides insulation and a firm bottom grip between the mounted object and the UNISTRUT. The injection-molded adjustable LOCKSTRAP (tensile strength 5400PSI) provides a secure restraint for the mounted equipment. LOCKSTRAP usable length is 15" (381mm), allowing it to be used to restrain many sizes and shapes of objects. Stainless steel fasteners are included.</p>
<p>Super Adjust A-Mount Kit PAC-1050</p> 	<p>The Super Adjustamount Kit features rugged modules mounted on 12" UNISTRUT, which provides unlimited positioning with countless uses (hydraulic power tools, shoring, etc). LOCKSTRAP usable length 15" -includes a 12" length of UNISTRUT (1-5/8" x 13/16").</p>
<p>HandleLok PAC-1004</p> 	<p>The new and improved HandleLok is an adjustable mounting bracket that provides secure mounting for tools, axe handles, poles, and other equipment. Grip range from 1/8" to 1-3/4". The base is injection-molded of Super Tuff nylon with high-strength glass fibers. An injection molded StretchLok (tensile strength 2500 PSI) with stainless steel pins and an injection molded nylon handle pin is resistant to weather, UV, oxidation, and deterioration. An neoprene soft pad provides excellent additional grip.</p>
<p>JumboLok PAC-1070</p> 	<p>Designed originally for Holmatro and Hurst Rams, JumboLok features 3 separate pivot positions, which allow the locking strap to be customized for your job. With a grip range of .375" to 3.250", JumboLok is ideal for folding ladders, electric drills, heavy-duty jacks, ropes, nozzles chains and much more.</p>
<p>Flexmount PAC-1002</p> 	<p>Flexmounts are flexible Y-shaped mounting brackets designed to provide a secure, grip-type mount for poles, nozzles, tools and other equipment from 1-3/4" to 2-1/2".</p>
<p>Toolok HD PAC-1003-HD</p> 	<p>The Toolok HD may be mounted horizontally or vertically. The radioed top end of the base is designed to prevent mounted items from rolling off prior to engaging the GRIPOK. It features easy, fast-locking, and instant release. Grip range is from 1/8" to 1-1/2".</p>
<p>Flexmount-II PAC-1002-2</p> 	<p>Same great design as the Flexmount except with a shortened shaft, and the base is turned 90° for mounting ease. Flexmount-II's are flexible Y-shaped mounting brackets designed to provide a secure, grip-type mount for poles, nozzles, tools and other equipment with a grip range from 1-3/4" to 2-1/2".</p>
<p>Universal Hanger PAC-1019</p> 	<p>The Universal Hanger, one of the newest products, is molded of high-strength, impact, and corrosion-resistant polypropylene. Used as a single unit, pairs, and even triples, the Universal hanger provides numerous mounting applications for a wide range of tools, ropes, cables, chains, etc.</p>
<p>Tool Hanger PAC-1009</p> 	<p>The Tool Hanger is a rugged, molded urethane black bracket designed to permit simple mounting for shovels, brooms, and other "T" head equipment. Resistant to weather, impact, UV, and corrosion, Tool Hanger provides a simple cost-effective method to hold a wide range of tools. Used with either the HandleLok or Toolok, the Tool Hanger permits reliable tool restraint together with instant release.</p>



SAFETY GLASSES

Protecting your vision is our mission. These glasses pass ANSI Z87.1 standards for safety eyewear by enduring extensive testing for optical clarity, impact resistance and proper eye coverage.



All of HexArmor's work safety glasses, no matter the tint, offer 100% UV protection from harmful rays. Each pair is chemically engineered with permanent anti-fog coatings that do not wash off over time, leaving you with unbeatable performance.

MX200

Anti-fog eyewear featuring a wraparound lens design that delivers maximum protection, the MX200 has a durable frame with a soft, low-pressure grip thanks to its unique dual-injection technology.



VS250

Like wearing your favorite pair of sunglasses, the VS250 features a streamlined, close-fitting design with a low pressure, yet stable, fit that is ideal for extended periods of wear with proprietary anti-fog coatings.



VS300

The VS300 is the luxury vehicle of safety eyewear. With permanent anti-fog coatings, these premium safety glasses feature seven side arm inclination levels, allowing for a comfortable fit no matter your head shape.



HexArmor® Extrication Gloves

**SAFETY
GLOVES**

HexArmor High Performance Rescue Safety Gloves offer the most Cut and Impact Resistance Available Today. Cut, puncture, and laceration hazards are extremely common at an extrication scene. HexArmor® outfits each and every extrication glove with a layer of cut-resistant SuperFabric® brand material, providing the highest level of laceration protection available. Our products, with SuperFabric® brand materials, exceed ISEA Level 5 cut protection, keeping first responders safe from shattered glass and sharp metal edges.



PART#: HX-4011



PART#: HX-4012



PART#: HX-4013



PART#: HX-4014

HexArmor® holmatro 4013E



Part#: HOL-HAGLV-4013

- ◆ SuperFabric® brand material palm provides ISEA Level 5 cut resistance - the highest level of protection available in the industry.
- ◆ Durable TP-X® palm utilizes the highest-level of abrasion resistance while maintaining an oil-resistant grip.
- ◆ Superior back-of-hand impact protection system
- ◆ Exterior and interior seams implement a double stitched core- durability and longevity.
- ◆ Reinforced index finger and thumb .

HexArmor® FireArmor® SR-X® 8180



Part#: HX-SRX-8180

- Extended gauntlet cuff for added protection against debris
- Reinforced thumb saddle and palm for increased durability and abrasion resistance
- NFPA 1971:2018 certified H2X+™ FR moisture barrier (interior layer)
- 100% Nomex® knit inner liner for 360° heat resistance (TPP>60)
- Kevlar® liner on back-of-hand provides added cut resistance for unexpected hazards



Dragon Fire Extrication Gloves

Dragon Fire BBP Rescue gloves provide the perfect combination of superior dexterity and advanced burn/cut protection, now available with a blood borne pathogen liner (yellow). Each is lined with the patented, flame and tear resistant Kovenex fabric, preventing injury from intense heat and burn, shattered glass particles and sharp metal objects.



Part #: DF-DFGLV-BBP



Part #: HOL-DFGLV



ESI TRAINING PROGRAMS

Without knowledge and information, today's ever-changing technical world would leave one far behind. The same is true in the world of vehicle extrication. Changes in design, materials and safety components in vehicles provide a constant challenge for today's rescuers.

ESI has taken on the challenge of developing the latest techniques in auto extrication using state-of-the-art equipment to handle the tasks at hand. Whether it is basic or advanced training, ESI has courses to disseminate the knowledge and teach the skills. ESI courses are not static, but ever-changing and innovative.

COURSE OFFERINGS

BASIC HYDRAULIC RESCUE TOOLS

BASIC HYDRAULIC RESCUE TOOLS REVIEW

HOLMATRO CUTTER REFRESHER

BASIC VEHICLE EXTRICATION

ADVANCED VEHICLE EXTRICATION – PART I

ADVANCED VEHICLE EXTRICATION – PART II

BUS CRASH EXTRICATION OPERATIONS

LARGE TRUCK CRASH EXTRICATION OPERATIONS

RESCUE SCENE MANAGEMENT

PNEUMATIC LIFTING BAGS

RESCUE WINCH AWARENESS & OPERATIONS

STEEL WIRE ROPE BARRIER SYSTEM

HANDLING HIGH VOLTAGE VEHICLE FIRE EMERGENCIES

VEHICLE FIRE OPERATIONS

NVT SERIES – NEW VEHICLE TECHNOLOGY



General Courses

Each course is designed to provide the student with current information, skills, and objectives that meet state and national criteria. Courses are held at our customer's locations for their convenience and to maintain readiness in their locale.

Custom Courses

ESI not only has a standard course list, but we can create custom courses to cover a particular piece of equipment or a specific skill. Our experienced training staff uses experience and intimate knowledge of equipment and techniques to make the learning experience worthwhile.



More Info:

📞 267-803-1440
 🌐 WWW.ESIEQUIPMENT.COM
 📧 INFO@ESIEQUIPMENT.COM

RECOGNITION AWARDS



ESI Holmatro **GOLD PIN** Award

Holmatro wants to recognize each person that assisted in the efforts of preserving lives by using a Holmatro Rescue Tool.

What is this award?

The Holmatro “GOLD PIN AWARD” comes with a certificate of achievement with the persons name and department, and a gold plated lapel pin in the shape of a miniature Holmatro Spreader.

Who is eligible for this award?

Those department members who were present at the scene of the incident.

How do you apply for this award?

The department must send a letter, signed by the Fire Chief or Officer in Charge, to Holmatro explaining the nature of the rescue call, how Holmatro Rescue Tools were used and how important it was that they had the equipment available. A copy of the incident report and if possible, copies of newspaper articles, television footage and/or pictures of the incident should be included.

Please send all the materials to:

ESI EQUIPMENT, INC
c/o Vicky Azzara
info@esiequipment.com
119 Keystone Drive
Montgomeryville, PA 18936

Shortly after receiving the information, Holmatro will send all certificates and Gold Pins to the attention of the Fire Chief or Officer in Charge. Should you have any questions regarding HOW and WHO can apply for the Holmatro “GOLD PIN”, please call us. **ESI Equipment proud to be dealer of Holmatro products and proud of the fire and rescue personnel and departments that use them.**

JYD Industries™ Life-Saver Recognition Award

JYD Industries has created a program to recognize lifesaving efforts performed by our customers while utilizing JYD Struts and Sidewinders during an extrication. The crew or team in actual contact with the equipment at the rescue scene will be acknowledged with the Life-Saver Award.

Criteria for consideration is the following:

- The use of the JYD Strut and/or Sidewinder devices in an actual emergency event where the use was a factor in extricating or retrieving the casualty.
- The use of the JYD Strut and/or Sidewinder in an unusual circumstance or emergency event that made the outcome positive.

A department is requested to submit to JYD Industries™ a detailed incident report of how the equipment was utilized and a list all personnel involved. Photographs of the equipment in use during the incident are helpful.

If selected, all personnel involved will receive a certificate of recognition and a JYD Life-Saver pin. Additionally, a Life-Saver decal will be sent to place on the apparatus acknowledging the lifesaving effort. Awardees and a description of the event will also be featured on the JYD website.



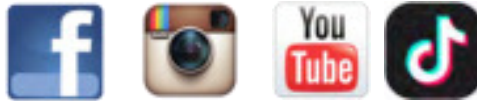
To submit a request for recognition, send to:

JYD Industries
c/o Vicky Azzara
info@jydind.com
119 Keystone Drive
Montgomeryville, PA 18936

ESI Equipment, Inc.

Toll-Free: 1-800-574-8228 · Office: 267-803-1440 · Fax: 267-803-1447
119 Keystone Drive · Montgomeryville, PA 18936

WWW.ESIEQUIPMENT.COM



The Official Rescue Equipment Provider for:



Official Partner of the AMR
INDYCAR Safety Team



Proud Supplier of



Sponsor of The Spirit of Courage
Awards for the Burn Prevention
Network.



Active Supporter of the NFFF,
National Fallen Firefighters
Foundation at Dover Speedway.



Member of FEMSA. The Fire and Emergency Manufacturers and Services Association.