



TRAINING PROGRAMS

BE PREPARED.

ESI TRAINING PROGRAM

Without knowledge and information, today's ever-changing technical world would leave one far behind. The same is true in the world of vehicle extrication. Changes in design, materials and safety components in vehicles provide a constant challenge for today's rescuers.

ESI has taken on the challenge of developing the latest techniques in auto extrication using state-of-the-art equipment to handle the tasks at hand. Whether it is basic or advanced training, ESI has courses to disseminate the knowledge and teach the skills. ESI courses are not static, but ever changing and innovative.

General Courses

Each course is designed to provide the student with current information, skills and objectives that meet state and national criteria. Courses are held at our customer's location for their convenience and maintaining readiness in their locale.

CUSTOM COURSES

ESI not only has a standard course list, but we can create custom courses to cover a particular piece of equipment or a specific skill. Our experienced training staff uses experience and intimate knowledge of equipment and techniques to make the learning experience worthwhile.

OPEN ENROLLMENT

ESI's open-enrollment training courses are perfect for departments only needing 1 or 2 members to be trained without having to pay for the entire department! Courses are first-come first-serve with 40 seats available per class. Courses are held at ESI's Training Center in Montgomeryville, PA.

COURSE OFFERINGS AND DESCRIPTIONS

BASIC HYDRAULIC RESCUE TOOLS

BASIC HYDRAULIC RESCUE TOOLS REVIEW

HOLMATRO CUTTER REFRESHER

BASIC VEHICLE EXTRICATION

ADVANCED VEHICLE EXTRICATION – PART I

ADVANCED VEHICLE EXTRICATION – PART II

BUS CRASH EXTRICATION OPERATIONS

LARGE TRUCK CRASH EXTRICATION OPERATIONS

RESCUE SCENE MANAGEMENT

PNEUMATIC LIFTING BAGS

RESCUE WINCH AWARENESS & OPERATIONS

STEEL WIRE ROPE BARRIER SYSTEM

HANDLING HIGH VOLTAGE VEHICLE FIRE EMERGENCIES

VEHICLE FIRE OPERATIONS

NVT SERIES – NEW VEHICLE TECHNOLOGY

Each of our instructors have at least 10 years street experience; some also have sustained local, state, and national instructor credentials. Every year ESI's training staff provides emergency responders with over 80 courses. Over 2,000 responders have benefitted and improved their knowledge and skills with their knowledge and skills with the latest in auto extrication and other related subjects.

BASIC HYDRAULIC RESCUE TOOL- REVIEW COURSE



To review with currently certified Holmatro Rescue Tool user's system and tool use in a classroom and practical setting. This course is intended to reinforce and review operational procedures and various techniques related to the Holmatro Rescue Tool systems.

Course Format: Lecture Discussion with Practical

Course Length: 3 Hours – 1.5 Hour Lecture with 1.5 Hour Practical

Class Size: Up to 15 Students

Reasons Why You Should Take this Course:

- Learn the basics of Holmatro Hydraulic Tool Rescue system AND utilize it to its full advantage
- Know how to properly maintain YOUR SPECIFIC Holmatro tools, to keep them always working at their max efficiency and effectiveness
- To equip your members with the skills to confidently approach any scene knowing the right technique to use at the right time to get the job done
- Receive a ESI Rescue Tools Review CERTIFICATE OF PARTICIPATION

BASIC HYDRAULIC RESCUE TOOL- COURSE

This basic course is designed to give students a working knowledge of the Holmatro Rescue System. Highlights include the development of rescue tools, hydraulic concepts, and show and tell of the tools in your system and how to properly maintain your system. The course includes hands on experience in latest basic hydraulic tool rescue techniques and how they apply to doors, roofs, steering columns, dashboards etc. Plenty of hands on is made available to assist the student with proper spreading techniques, different cutting styles and getting the most out of rams.

Course Format: Lecture Discussion with Practical

Course Length: 8 Hours - 4 Hour Lecture with 4 Hour Practical

Class Size: 2 Instructors, up to 24 Students; Additional Instructors required for larger class size



Reasons Why You Should Take this Course:

- Learn the basics of Holmatro Hydraulic Tool Rescue system and utilize it to its full advantage
- Know how to properly maintain YOUR SPECIFIC Holmatro tools, to keep them always working at their max efficiency and effectiveness
- To equip your members with the skills to confidently approach any scene knowing the right technique to use at the right time to get the job done
- Receive a Holmatro Basic Hydraulic Rescue Tools CERTIFICATE OF PARTICIPATION

HOLMATRO CUTTER REFRESHER COURSE

Just because we CAN cut something does not mean we SHOULD.

This program will arm your members with the knowledge of not just what to cut, but WHERE, HOW, and WHY. Students will obtain a working knowledge of Holmatro's round, NCT, incline and straight blade Cutters. Learn techniques on how to maximize your cutter's capability while staying current on new vehicle construction. Keep your members safe by educating them on the "danger areas" for Cutter use.

Protect your investment through a simple understanding of proper maintenance and storage protocols of your cutters to maximize use.

Course Format: Lecture Discussion (with Practical available)

Course Length: 1.5 Lecture and 1.5 Hour Practical

Class Size: 2 Instructors, up to 20 Students



Reasons Why You Should Take this Course:

- Ensure SAFE and EFFECTIVE use of your hydraulic cutting tools
- Stay current in best practices
- Protect your tool investment
- Most important take away: Know not just WHAT to cut, but WHERE and HOW to cut and WHY proper cutting is imperative during vehicle extrication
- Receive an ESI Cutter Refresher CERTIFICATE OF PARTICIPATION



BASIC VEHICLE EXTRICATION COURSE

This is a basic course designed to be tailored to your company's equipment and training needs. It will be conducted in a modular fashion where groups move through learning stations. This course addresses the responsibilities of firefighters in response to a vehicle accident and how to safely manage a scene and provide the safe removal of victims of a vehicle accident.

This course follows the minimum standards for acceptable practices for auto extrication and follows the steps or phases of a rescue revolving around patient access, disentanglement, and removal.

- Preparation
- Response
- Assessment
- Hazard Control
- Support Operations
- Patient Access
- Disentanglement
- Patient packaging and removal
- Terminations of the incident



Course Format: Lecture and Practical

Course Length: 16 Hours- 4 Hour Lecture and 12 Hour Practical

Class Size: 2 Instructors, Up to 20 Students; additional Instructors required for larger class size

Reasons Why You Should Take this Course:

- Learn the basics of vehicle extrication
- Gain a strong understanding of operational procedures related to your rescue tools
- Safely manage a scene confidently and with great efficiency
- Stay current with vehicle technology
- Receive a Basic Vehicle Extrication Course CERTIFICATE OF PARTICIPATION

ADVANCED VEHICLE EXTRICATION COURSE: PART I



This advanced course is designed to give the student scenario-based training with more difficult extrication challenges. Each learning station involves extrication skills and techniques that are based on vehicles placed in various positions and the actual entrapment of a simulated patient. Removal of a patient on a backboard is required for successful completion.

To maximize the experience, all equipment the fire company has pertinent to auto extrication is utilized. Teamwork and incident command is emphasized in order to improve the process of extrication in the real world.

Course Format: Lecture-Discussion with Practical

Course Length: 8 Hours - 2 Hour Lecture with 6 Hour Practical

Class Size: 3 Instructors, up to 30 Students

ADVANCED VEHICLE EXTRICATION COURSE: PART II

Putting it altogether

Taking the Advanced Rescue Part I to the next level, this program combines realistic practical evolutions and Rescue Scene Management. A short classroom session reviews Rescue Scene Management and Incident Command at a rescue scene. The practical session follows where teams are placed in scenarios utilizing dispatch and radio communications and face multiple vehicle/multiple patient crash incidents.

The students are tested on their management skills as well as their rescue techniques. Integrating and working with EMS is an essential part of the program. By testing management, EMS, and rescue all at the same time, the class creates a real-life learning environment, many times testing the limits of the teams.

Pre-requisite: Advanced Vehicle Extrication Part I.

Course Format: Lecture-Discussion with Practical

Course Length: 8 Hours - 2 Hour Lecture with 6 Hour Practical

Class Size: 3 Instructors, up to 30 Students



BUS CRASH EXTRICATION OPERATIONS

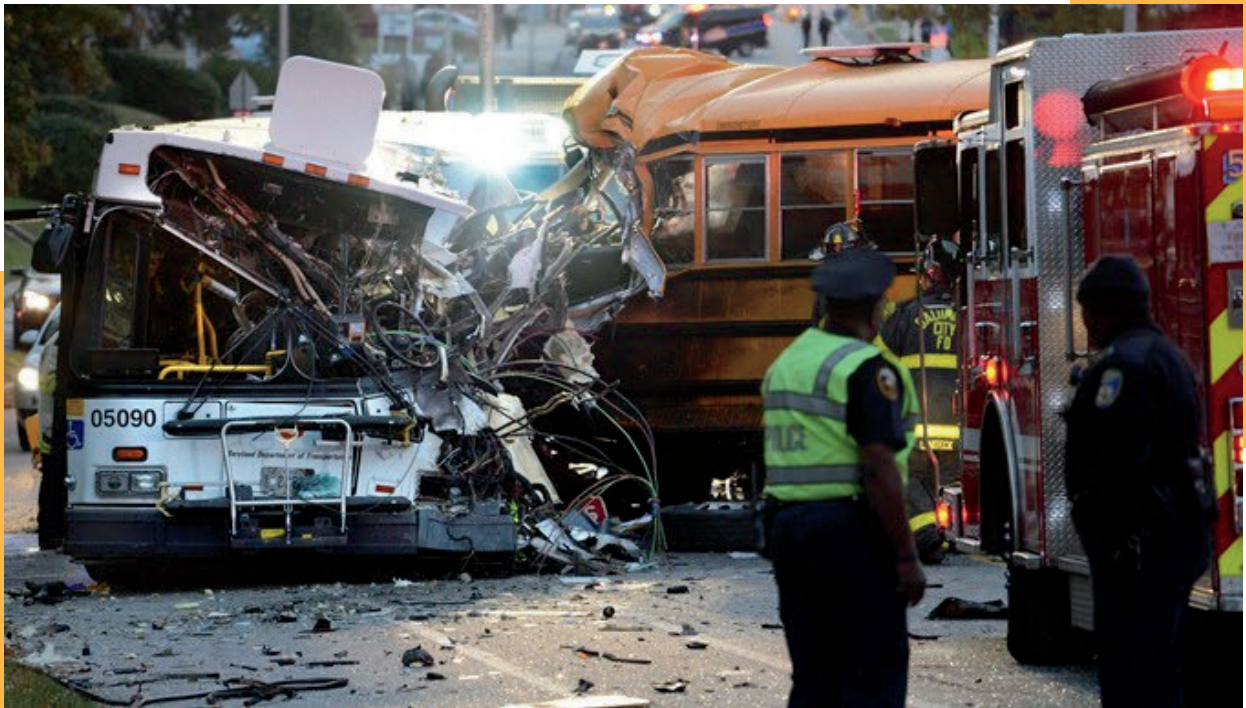
Bus crash scenes can be extremely difficult to manage. This program is designed to familiarize the participant with the complexities of rescue operations involving extrications from buses. The course will review the various types of buses, their construction features, and differences. Participants will be introduced to the methods for stabilization, access, hazard recognition and control, triage, victim disentanglement, and preparation for patient care, packaging and removal, and scene management.

The program will be presented in a lecture and practical skill format to maximize the participants' ability to perform efficiently and effectively when confronted with these types of rescue operations. Several learning stations will be utilized on the same bus to provide the participants with as realistic scenarios as possible.

Course Format: Lecture-Discussion (with Practical available)

Course Length: 3 Hours Lecture (additional 8 hours Practical)

Class Size: 2 Instructors, up to 20 Students



Reasons Why You Should Take this Course:

- Designed to enhance the rescuer's understanding of various bus construction, design, and components, victim access and patient care
- Reviews various bus anatomy - everything from common bus construction, wheel chair assessable vans and buses to the new electric buses
- Using your tools to solve problems during large bus crashes
- Learn the complexities of providing on-scene operations safety
- Receive a Bus Crash Extrication Operations CERTIFICATE OF PARTICIPATION

LARGE TRUCK CRASH EXTRICATION OPERATIONS

Reasons Why You Should Take This Course:

- Understand the methods for stabilization, access, and disentanglement for large truck operations
- Using your tools to overcome problems during large truck crashes
- Learn the classification of large trucks
- Understand the anatomy of both conventional models on the road today and the new electric trucks gaining traction - changes in the industry provide new challenges to rescuers
- Receive a Large Truck Crash Extrication Operations CERTIFICATE OF PARTICIPATION



This program is designed to provide information to the participant on the concerns of victim extrication operations related to large truck accidents. The program provides an overview of the anatomy and construction of large trucks, hazards that can be encountered in accident situations, and potential solutions that can lead to the successful extrication of the victims.

Participants will be guided through the methods of scene size-up, stabilization, hazard recognition and control, vehicle stabilization, victim access, and disentanglement methods. The program is presented in a format to maximize the participants' ability to apply the information for efficient and effective rescue operations

Course Format: Lecture-Discussion (with Practical available)

Course Length: 3 Hours Lecture (additional 8 hours Practical)

Class Size: 2 Instructors, up to 20 Students

RESCUE SCENE MANAGEMENT



This course presents a systematic approach to the vehicle rescue scene with an emphasis on answering the “Who oversees what?” question and organizing all responding agencies and personnel.

This program provides specific scenarios to educate your members on how to maximize personnel, equipment, and responder’s performance. Individuals need to know the same “10,000 bits of information” to make vital separate decisions necessary on the scene in a rapid-fire, effective manner.

Avoid the frustration of on-scene conflict and chaos by learning to work as one cohesive unit, maximizing the use of ALL responding emergency services agencies involved in any scenario for smooth and effective operations.

Course Format: Lecture-Discussion

Course Length: 3 Hours

Class Size: Unlimited

PNEUMATIC LIFTING BAGS COURSE

The objective of this program is to increase the user's knowledge of the proper operation use and care of Lifting Bag Systems. Proper setup and utilization of your lifting bags are essential for maximum performance. This course is customized based on your department's current lifting bag inventory.

You will learn about tandem tilt and stacked bag lifting, performance differences, safe utilization, and maintenance. This course will arm your members with take-aways that build confidence in knowing how and when to use them for greater efficiency and effectiveness.

Course Format: Lecture-Discussion and Practical

Course Length: 3 Hours: 1.5 hour Lecture and 1.5 Hour Practical

Class Size: 1 Instructor up to 25 Students



Custom Courses Available:

High Pressure and Ultra-High Pressure Lifting Bags Course

The objective of this program is to increase the user's knowledge of the proper operation use and care of 8 bar (118psi), 10 bar (145 psi), 12 bar (174 psi), 15 bar (218 psi) Lifting Bag Systems

High-Pressure Flat Form Lifting Bags Course

The objective of this program is to increase the user's knowledge of the proper operation use and care of 8 bar (118 psi), 10 bar (145 psi), 12 bar (174 psi) Lifting Bag Systems

Medium Pressure Standard Bags Course

Low-Pressure Standard Bags Course

RESCUE WINCH AWARENESS & OPERATIONS



Just about every emergency service provider has a winch in their equipment arsenal. This interactive training program was designed, based on the rescuer's needs and provides the proper procedures and techniques for using vehicle-mounted or portable winches.

This course will cover the use, maintenance, and safety aspects of a winch and related equipment in rescue situations. You will gain knowledge on how to hold loads, pull loads, and secure vehicles for stabilization. This course will also provide techniques on how to properly inspect your winch for safe, efficient, and effective rescue operations. You will learn to use a simple formula to calculate how to safely operate a winch to prevent injury to personnel or damage to equipment. For the course of the operations, in addition to the lecture, the practical component will include a hands-on application on using and maintaining your winch.

Don't let this important piece of equipment sit idle when it's the best solution for a fire or rescue situation.

Awareness Course Format: Lecture-Discussion 3 hours

Operations Course Format: 3.5 hours Practical

Can take Awareness and operational as one day program*

Class Size: Lecture Only—Unlimited; With Practical— 1 Instructor, up to 15 Students

STEEL WIRE ROPE BARRIER SYSTEM COURSE

Arm your members with procedures and tactics that emergency responders can safely use when confronted with a Wire Rope Barrier System at motor vehicle crashes through ESI's Custom Training Program. Steel Wire Rope Barrier Systems have made a resurgence recently for use on highways in the United States. Their primary purpose is to prevent a vehicle that has left the roadway from striking objects, terrain, or other motor vehicles.

What should you do when your service is dispatched to a motor vehicle crash on a nearby highway and you discover the vehicle is entangled in the cables? The cable Guardrail System is blocking the access routes to the victims. Your first impulse is to simply "cut" the cables out of the way and continue with the rescue operation. This thought can be extremely dangerous to the rescuers and victims in the incident. This program will review the information that rescuers should know about the systems design, construction, and repair.

Course Format: Lecture-Discussion

Course Length: 2 Hours

Class Size: Unlimited



Reasons Why You Should Take This Course:

- Because your first instinct is to "cut" steel wire cables and that can be extremely dangerous to the rescuers and victims if you aren't aware of alternative methods
- Ensure that your team and equipment are ready to respond with confidence
- For peace of mind, knowing your department is equipped to confidently approach a scene knowing the best procedures and tactics that emergency responders can safely use when confronted with a Wire Rope Barrier System on the scene
- Learn the various system types and components
- Receive a Steel Wire Barrier CERTIFICATE OF PARTICIPATION

HANDLING HIGH VOLTAGE VEHICLE BATTERY FIRE EMERGENCIES AWARENESS COURSE



This will not be your everyday vehicle fire. This interactive program will provide the participants with valuable information on electric vehicle battery fires.

The program will provide the progression of hybrid to current electric vehicle models. Learn firefighting and extrication tactics specific to electric vehicles. The discussion will also include vehicle manufacturers' recommendations on post-crash fire, cleanup, and storage of electric vehicles.

Course Format: Lecture/Awareness Section 2.5 Hours

Reasons Why You Should Take This Course:

- The popularity and number of battery vehicles on the road today are only increasing.
- Because of this, you will be faced with new challenges on-scene with crashes involving high-performance battery-vehicles.
- This interactive course is a unique opportunity to review high-performance battery-car crashes and what the aftermath of those crashes will entail.
- To arm your department with safe and proven tactics that will prepare them for the challenges of new car technology and the hazards that come with them.
- Receive a Handling High Voltage Vehicle Fire Emergencies CERTIFICATE OF PARTICIPATION

HIGH VOLTAGE VEHICLE BATTERY FIRE OPERATIONS



Have you ever trained or performed vehicle extrication in full PPE including SCBA? If not why not? Have you ever trained or performed vehicle extrication in full PPE, SCBA, and under the protection of a flowing hoseline? Are we not supposed to be ready for any situation, especially to extricate a patient involved in a Motor Vehicle crash with fire?

ESI has been a leader in providing High Voltage Vehicle Battery Fire Awareness for the past few years. We now want to take the program to the next level with a unique hands-on training program.

Participants will learn:

1. How to set up a vehicle to cool down the battery pack
2. How to successfully extricate a simulated victim, should they be involved in a high voltage crash.

Course Format: Practical

Course Length: 3 hours

Class Size: 2 Instructors Up to 20 Students

Prerequisite: High Voltage Vehicle Battery Fire Awareness Lecture

NVT SERIES

NEW VEHICLE TECHNOLOGY COURSE

NVT (New Vehicle Technology) Series consists of training programs designed to provide students with valuable information regarding recent developments in the automobile industry related to vehicle construction and occupant restraint systems. Our NVT Series Courses will educate today's responders with information that incorporates the location and identification of the new model vehicle components, and what happens to new model vehicles in numerous crash scenarios.

Our mission is to arm members of your department with the mental tools needed to face NVT scenarios and to eliminate the danger of expecting older-knowledge and techniques to be effective during extractions performed on newer vehicles.



NVT SERIES INCLUDES:

PART 1 — MODERN AIRBAG RESTRAINT SYSTEMS

PART 2 — NEW VEHICLE TECHNOLOGY

A.) DOORS AND B-POSTS

B.) DASHBOARD DISPLACEMENT

C.) ROOFS AND FLOOR

PART 3 — HYBRID ELECTRIC VEHICLES

PART 4 — PRACTICAL EVOLUTIONS AVAILABLE ON REQUEST.

REASONS WHY THESE COURSES WILL BENEFIT YOU:

- Gain an understanding of new vehicle technology, their components and location, and proper techniques during extrication on newer vehicles.
- Learn the challenges on-scene with crashes involving modern vehicles.
- This interactive course is a unique opportunity to review new technology car crashes and how the aftermath of those crashes will challenge rescuers.
- To arm your department with safe and proven tactics that will prepare them for the challenges of new car technology and the hazards that come with them.
- Receive a NVT Series Training CERTIFICATE OF PARTICIPATION



Sales – Represent the best products we can find or make to perform the rescue tasks confronted by today's rescuers. The staff at ESI is prepared to demonstrate equipment at your departments location for a real "hands-on" experience. Call to schedule 1-800-574-8228.

Service – Full time, factory trained, service technicians performing scheduled preventative maintenance on your rescue equipment. Emergency response with repairs done at the customer's locations. Loaner equipment and 24 hour support is available.

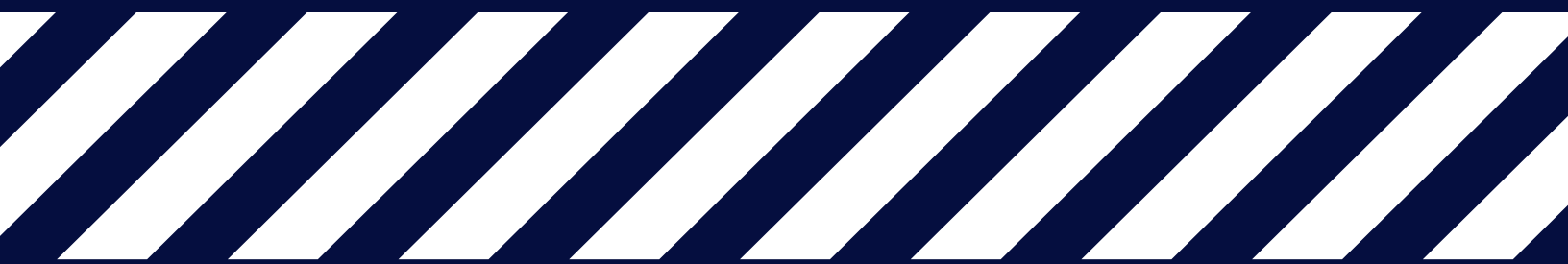
Installations – ESI has the ability to design, fabricate and install well-thought-out hydraulic rescue systems. Designed to provide ease of deployment, minimal space requirements, and serviceability, ESI's CAD drawing system gives accurate designs for years of ergonomic service. ESI also offers complete fire apparatus installation of all equipment at your location or ours.

Training – ESI provides the most current vehicle rescue training information and techniques. From basic to advanced, training classes are designed for the novice as well as the experienced responders. ESI instructors are cross trained with 10+ years of training experience.



MISSION STATEMENT

To supply, support, and educate the emergency response community with state-of-the-art equipment and up-to-date knowledge and information to enhance their rescue and life-saving efforts.



ESI EQUIPMENT, INC.

119 KEYSTONE DRIVE
MONTGOMERYVILLE, PA 18936
267-803-1440
800-574-8228
WWW.ESIEQUIPMENT.COM